

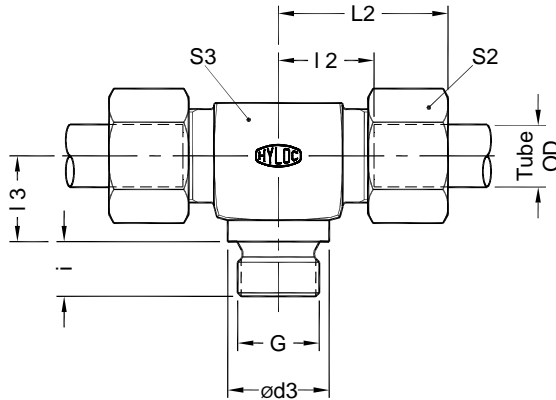
Male Stud Branch Tee Couplings

TE-G

Dimensions in mm

DIN Fittings

Metric Tube end as per ISO 8434
and BSPP (G) stud end



Part No.	Series	Tube od	G Male BSP thread	ø d3	i	I 2	I 3	* L2	S2	S3
TE22PLG	160 bar	22	G 3/4 A	32	16	27.5	26	44.5	36	32
TE28PLG	Light L	28	G 1 A	39	18	30.5	30	48.5	41	41
TE35PLG		35	G1 1/4 A	49	20	34.5	34	57.5	50	50
TE42PLG	100 bar	42	G1 1/2 A	55	22	40.0	39	63.5	60	55
TE20PSG	Heavy S	20	G 3/4 A	32	16	26.5	26	49.0	36	32
TE25PSG		400 bar	25	G 1 A	39	18	30.0	30	55.0	46
TE30PSG	250 bar	30	G1 1/4 A	49	20	35.5	34	63.5	50	50
TE38PSG		38	G1 1/2 A	55	22	41.0	39	72.5	60	55

* Dimensions given are approx figures with tightened nut.