



FLOW DIVIDER VALVE FD

ENGINEERING

1

Ref. No. P06727

Release 09/2000

Description

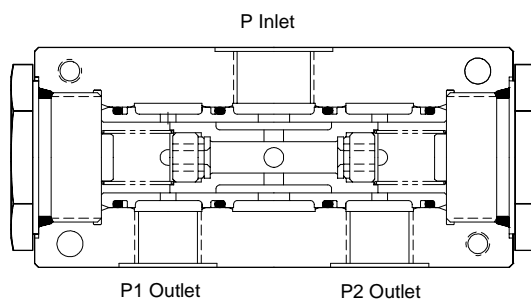
Flow divider valves provide dual flow from a single source at a predetermined ratio, regardless of load.

Maximum dividing error is $< \pm 5\%$

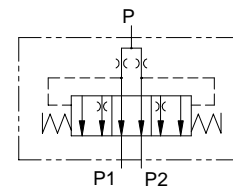
Threaded port body.



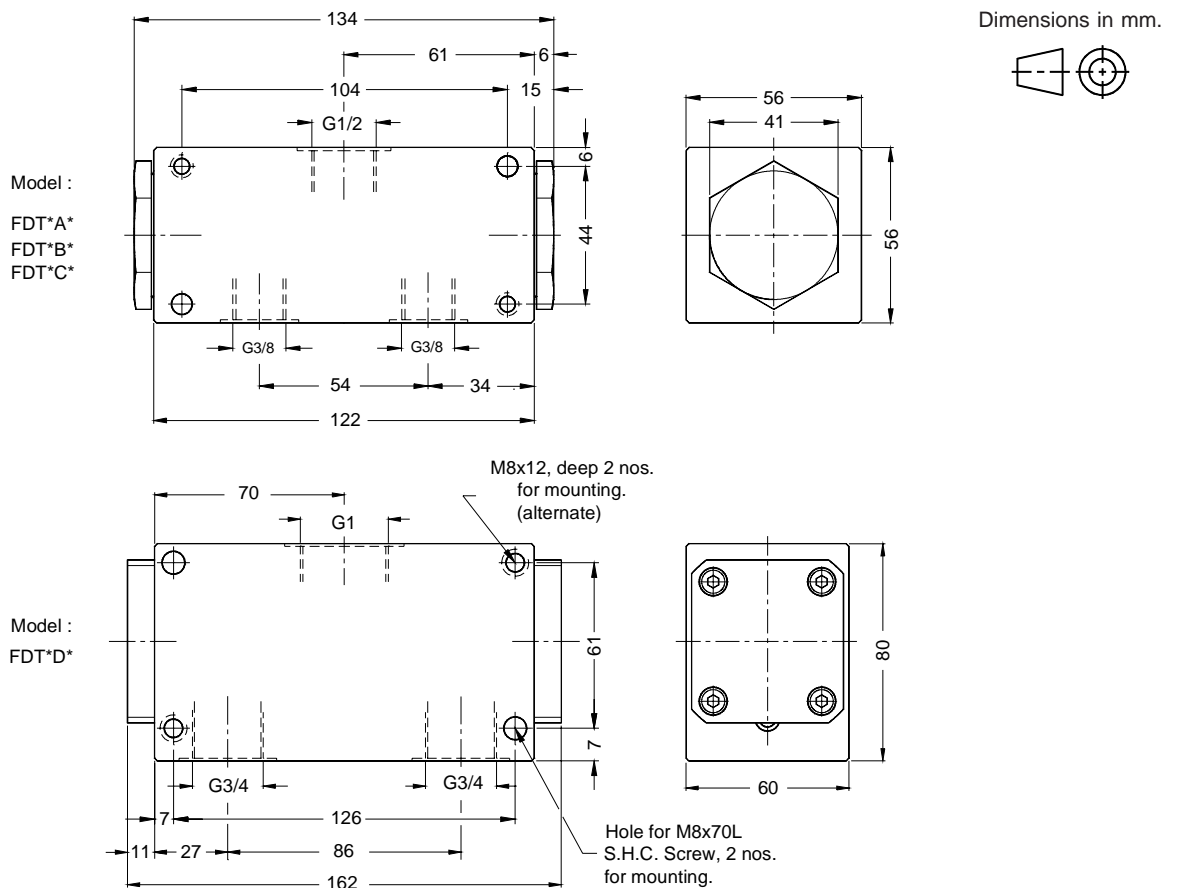
Section



Hydraulic Symbol



Unit Dimensions



Polyhydron Pvt. Ltd.

78-80, Machhe Industrial Estate,
Machhe, Belgaum - 590 014. INDIA.

Phone : +91-(0)831-411001

Fax : +91-(0)831-411002

E-mail : polyhydron@vsnl.com

Website : www.polyhydron.com



FLOW DIVIDER VALVE FD

ENGINEERING

2

Ref. No. P06727

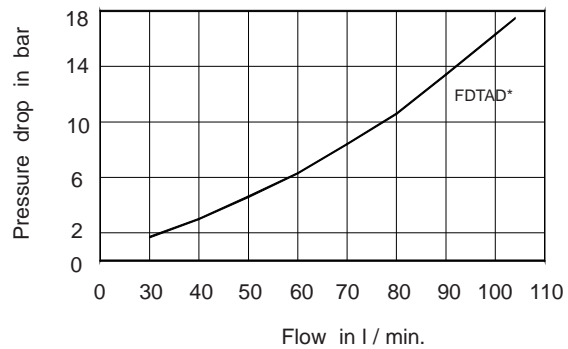
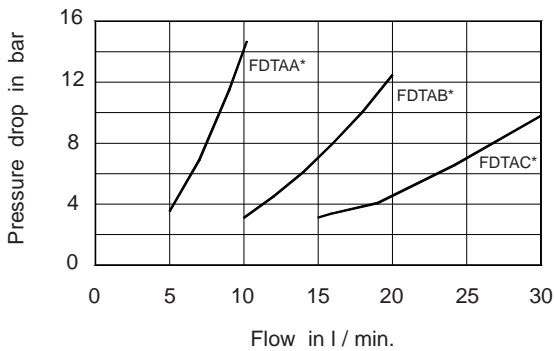
Technical Specifications

- Construction Pressure compensated spool type.
- Mounting type Threaded body.
- Mounting position Horizontal.
- Pressure drop across valve Refer graph.
- Dividing accuracy $\leq \pm 5\%$
- Fluid Mineral oil.
- Fluid temperature range -20 °C to +70 °C.
- Fluid cleanliness requirement As per ISO 16/3 or better.
- Flow range Refer ordering code
- Operating pressure 315 bar.

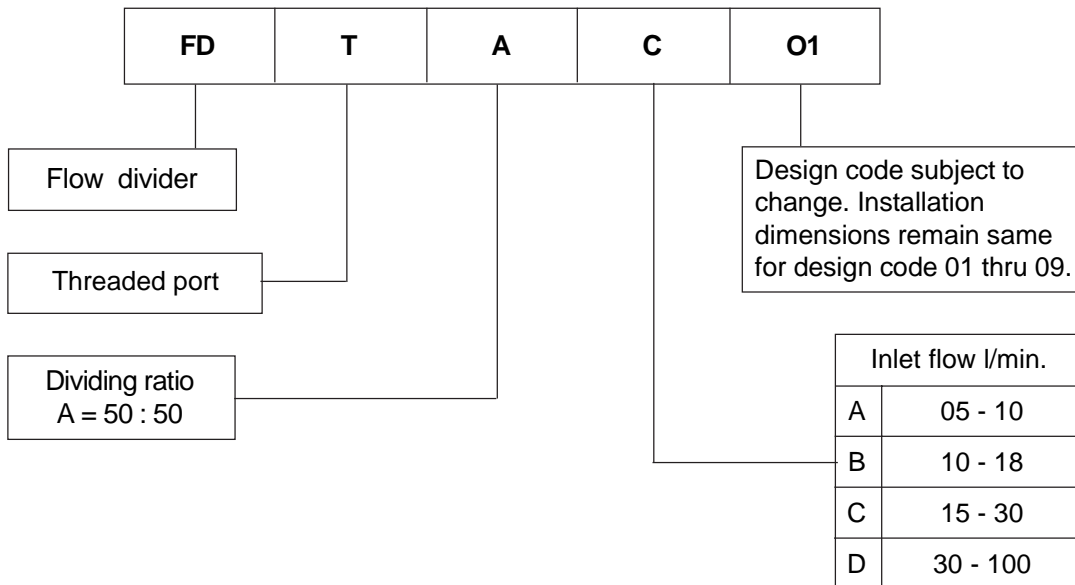
Mass	Model	FDTAA*	FDTAB*	FDTAC*	FDTAD*
	Mass Kg.	2.5	2.5	2.5	5

Performance Curves

Oil used : ISO VG 68, Viscosity : 68 cSt @ 40 °C, temp. @ test : 35 °C.



Ordering Code



All rights reserved.
Subject to revision.