

Adjustable Throttle and Throttle Check Valves, Model : TT/TCT



the right connection
the right environment

Ref. No : H03364 Release Nov 2014 (Dimensions in mm)

Description

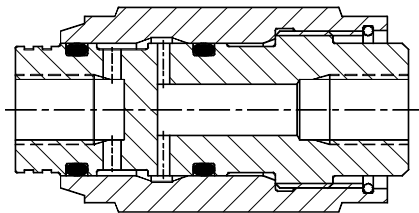
Non pressure and viscosity compensated valves.

Model TT Throttle valves allow adjustable throttled flow in both the directions.

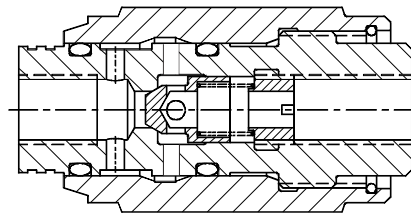
Model TCT Throttle check valve gives adjustable flow in one direction and allows free flow in opposite direction.



Section



TT



TCT

Hydraulic Symbol

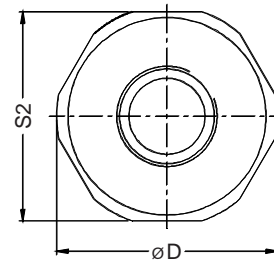
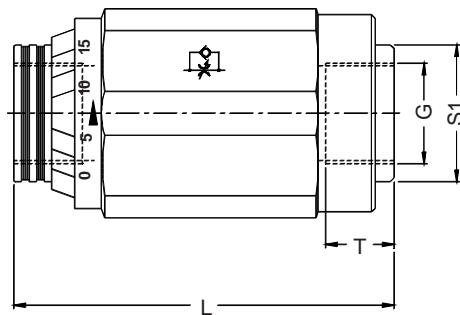
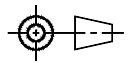


TT



TCT

Unit Dimensions



Ordering Code		G	T	S1	S2	L	ØD
TCTG02-2.0	TTG02-2.0	G 1/4	12	19	32	65	34
TCTG03-2.0	TTG03-2.0	G 3/8	13	26	36	65	38
TCTG04-2.0	TTG04-2.0	G 1/2	14	27	46	80	49
TCTG06-2.0	TTG06-2.0	G 3/4	18	37	55	100	58
TCTG08-2.0	TTG08-2.0	G1	18	41	70	110	74
TCTG10-2.0	TTG10-2.0	G1.1/4	22	58	85	130	87
TCTG12-2.0	TTG12-2.0	G1.1/2	22	60	90	150	94

Adjustable Throttle and Throttle Check Valves, Model : TT/TCT



the right connection
the right environment

Ref. No : H03364 Release Nov 2014 (Dimensions in mm)

Technical Specifications

Construction	Inline threaded body with rotating sleeve for flow adjustment. Non pressure and viscosity compensated.
Mounting style	Inline, threaded body
Mounting position	Optional
Flow direction	For model TCT : Free flow in one direction. Adjustable throttled flow in opposite direction as indicated on the valve body. For model TT : Adjustable throttled flow in both the directions
Operating pressure	315 bar.
Hydraulic medium	Mineral oil.
Viscosity range	10 cSt to 380 cSt.
Fluid temperature range	-20 °C to +70 °C
Maximum flow handling capacity	TCTG02/TTG02 25 l/min TCTG03/TTG03 TCTG04/TTG04 50 l/min TCTG06/TTG06 TCTG08/TTG08 200 l/min TCTG10/TTG10 TCTG12/TTG12 400 l/min

Ordering Code

