

# Shut off Valve - Sub-plate mounting, Model : MSSL06-2.0



the right connection

Ref. No : H02651, Release Jan 2006 (Dimensions in mm)

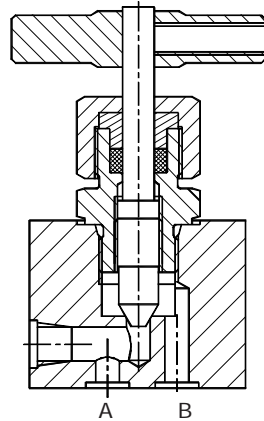
## Description

Shut off valves model MSSL06-2.0 are rising spindle, seat type valves with metal to metal seat for leak-free closure between it's port 'A' and port 'B'.

The mounting interface confirms to ISO 5781 - AB - 03 - 4 - B.



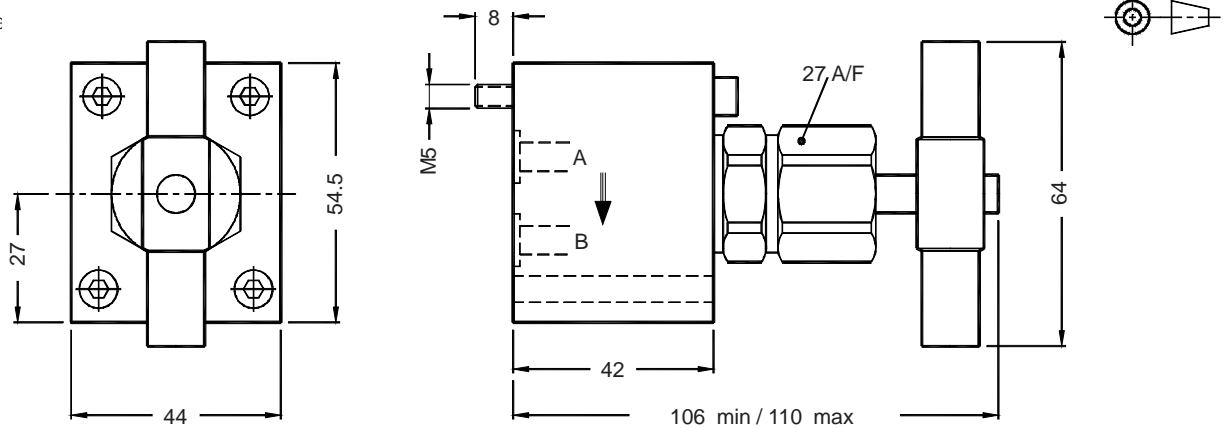
## Section



Hydraulic Symbol

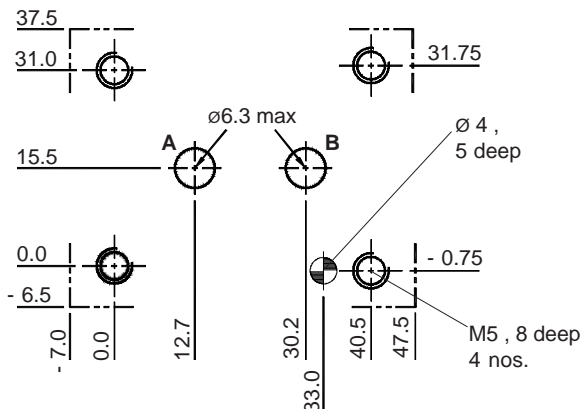
## Unit Dimensions

Valve



Note : Valve fixing screws : M5 x 50 L, ( 10.9 ) 4 nos.  
Tightening torque : 9 Nm

## Interface - as per ISO 5781 - AB - 03 - 4 - B standard



Mounting Surface roughness : 0.8  $\mu\text{m}$

Mounting Surface flatness : 0.01  $\mu\text{m}/100 \text{ mm}$

# Shut off Valve - Sub-plate mounting, Model : MSSL06-2.0



the right connection

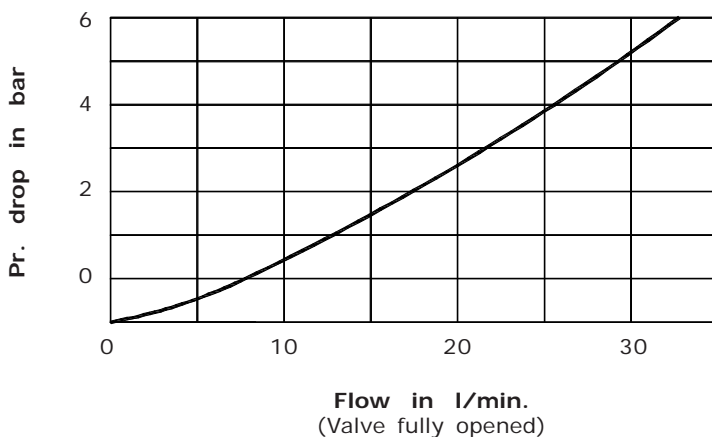
Ref. No : H02651, Release Jan 2006 (Dimensions in mm)

## Technical Specifications

- Construction . . . . . Seat type.
- Mounting type . . . . . Sub-plate mounting type.
- Interface . . . . . ISO 5781 - AB - 03 - 4 - B.
- Mounting position . . . . . Optional
- Flow direction . . . . . From port `A' to port `B'.
- Operating pressure . . . . . 315 bar.
- Hydraulic medium . . . . . Mineral oil.
- Viscosity range . . . . . 10 cSt to 380 cSt.
- Fluid temperature range . . . . . -20 °C to +80 °C.
- Fluid cleanliness requirement . . . . . As per ISO 19/16 or better.
- Mass . . . . . 0.9 kg.
- Maximum flow handling capacity . . . . . Refer graph.

## Performance Curves

- Oil used : ISO VG 68,
- Viscosity : 68 cSt @ 40 °C
- Test conducted at : 50 °C.



## Ordering Code

