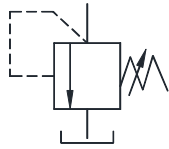


## Direct Operated Pressure Relief Valve

These valves are used in a hydraulic circuit to prevent damage due to excess pressure and to adjust the max. Pressure of small capacity. Available sizes NG6 & NG10.

Graphic Symbol



## Specifications

Model Number	Max. Operating Pressure Kgf/cm <sup>2</sup>	Pres. Adj. Range Kgf/cm <sup>2</sup>	Max. Flow L/min.	Mass Kg.
YCB-06	400	See Model No. Designation	50	1.5
YCB-10			120	3.25

## Model Number Designation

YCB	-06	-A	-G	-2	-10
Series Number	Valve Size	Pres. Adj. Range Kgf/cm <sup>2</sup>	Type of Mounting	Type of Operation	Design <sup>*1</sup> Number
YCB: Cartridge type Relief Valve	06 10	<b>A0</b> : 0-25 <b>A</b> : 7-50 <b>B</b> : 50-100 <b>C</b> : 100-200 <b>D</b> : 150-315 <b>E</b> : 150-400	<b>None:</b> Cartridge Type  <b>G:</b> Sub Plate Type  <b>T:</b> Threaded Type	<b>1</b> : Adj. Screw  <b>2</b> : Hand Knob	<b>10</b>

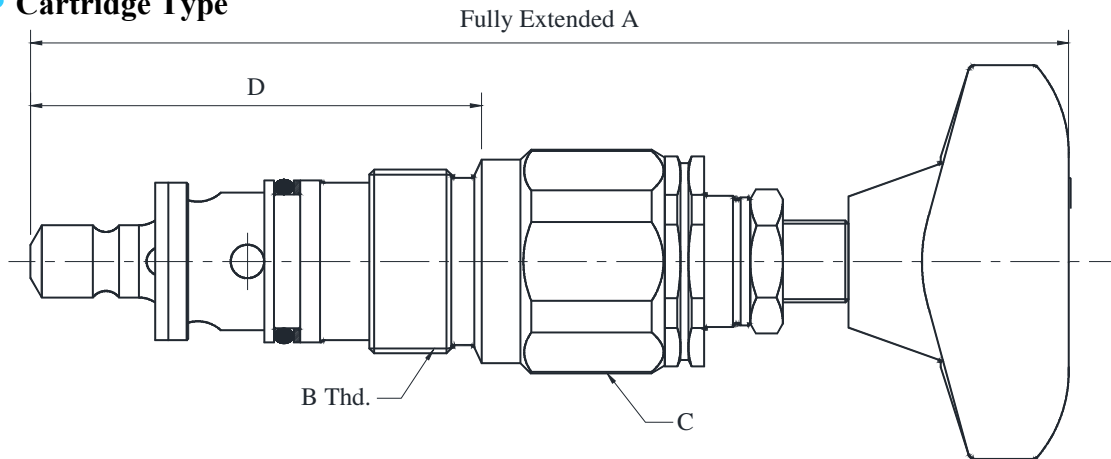
\*1 Design numbers subjected to change, but installation dimensions remains as shown.

## Mounting Bolts

Model Numbers	Socket Head Cap Screw	Qty.	Mounting Bolt Ordering Code
YCB-06-※-G-10	M6 x 35 Lg.	4	BKYCB-06-10
YCB-10-※-G-※-10	M8 x 50 Lg.	4	BKYCB-10-10

## Mounting Details

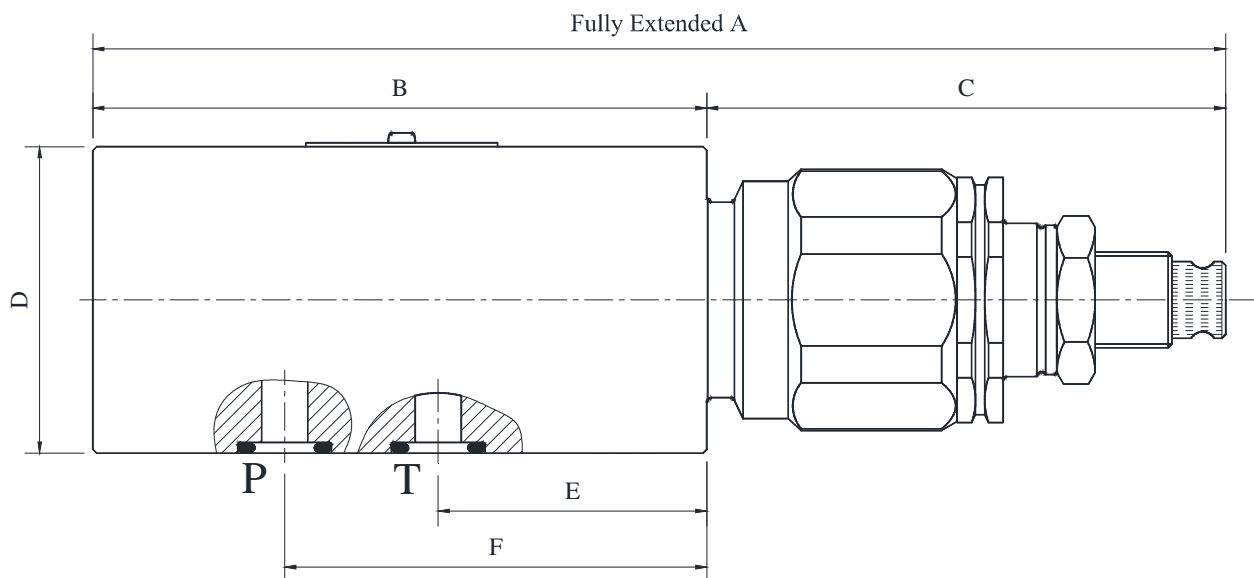
### Cartridge Type



Model Numbers	A	B	C	D	Cavity Details
YCB-06-※-1-10	132	M28 x 1.5	A/F 32	69	Refer Page No. 266
YCB-06-※-2-10	158				
YCB-10-※-1-10	142	M35 x 1.5	A/F 36	82.5	
YCB-10-※-2-10	169				

DIMENSIONS IN MILLIMETRES

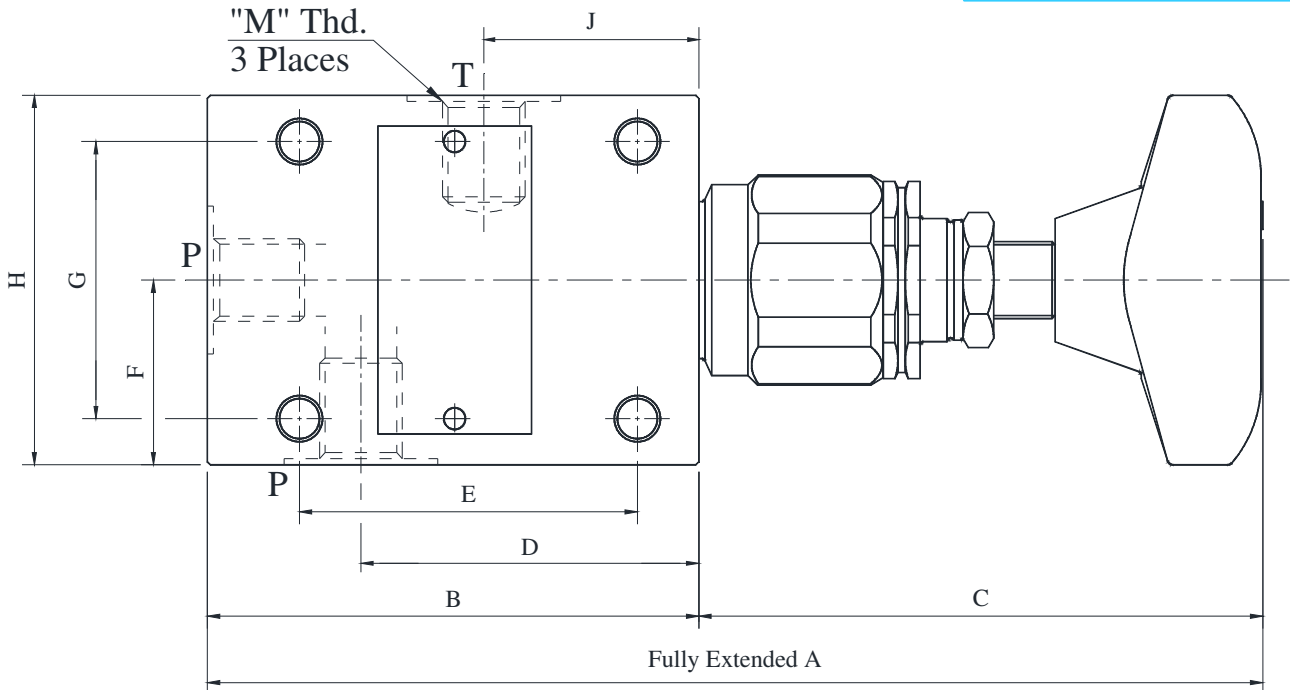
### Sub-plate Mounting



Model Numbers	A	B	C	D	E	F
YCB-06	147.6	80	67.6	40	35	55
YCB-10	164	100	90.3	60	41	65

• Threaded Type

DIMENSIONS IN MILLIMETRES



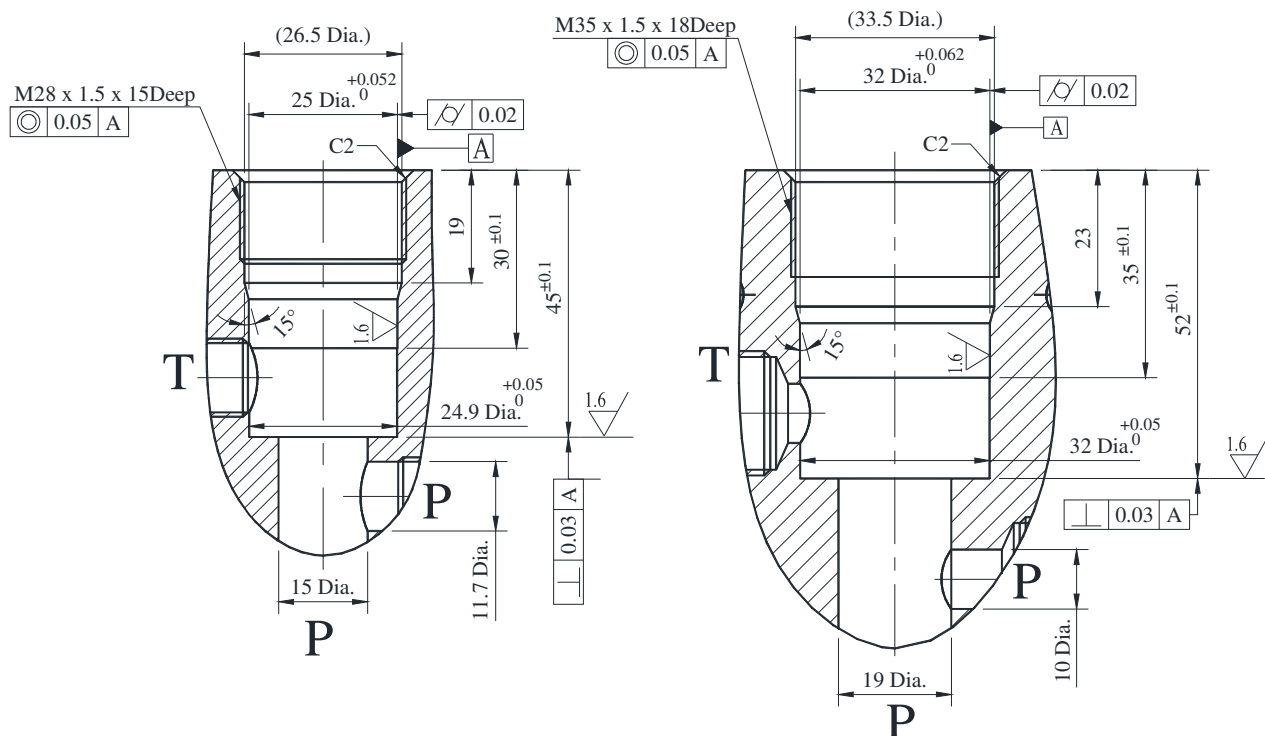
Note : Two optional 'P' ports at 90° to each other are provided. Block the one not in use.

Model Numbers	A	B	C	D	E	F	G	H	J	M
YCB-06	174	80	94	55	55	30	45	60	35	1/4 BSP.F
YCB-10	168.5	100	68.5	69	70	40	60	80	41	1/2 BSP.F

■ Mounting Cavity Dimensions

• YCB-06

• YCB-10

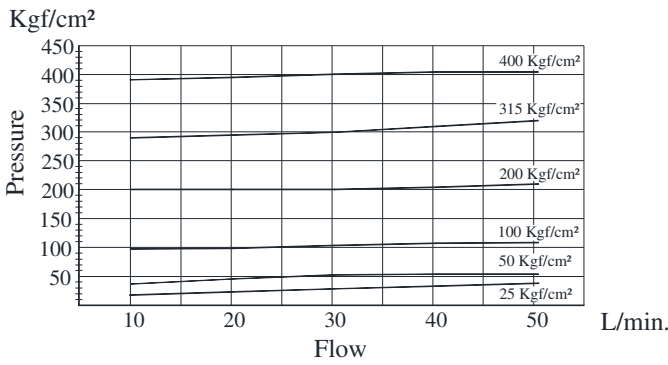


Note : Two optional 'P' ports at 90° to each other are provided. Block the one not in use.

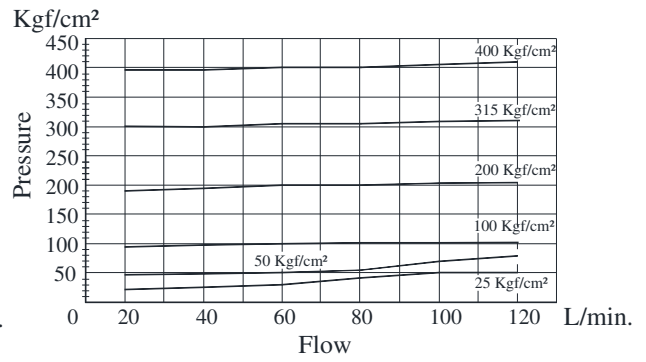
Direct Operated Pressure Relief Valve

## Pressure Characteristics Curve

### YCB-06

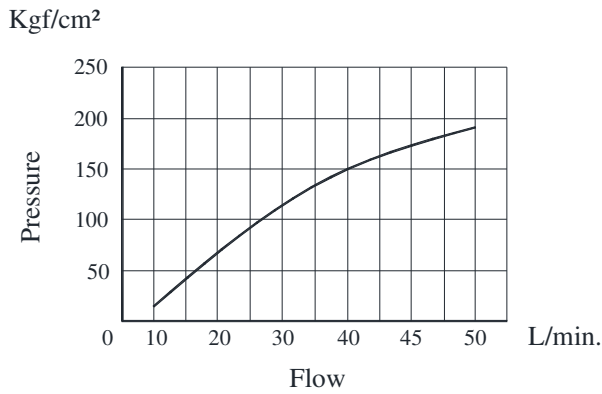


### YCB-10

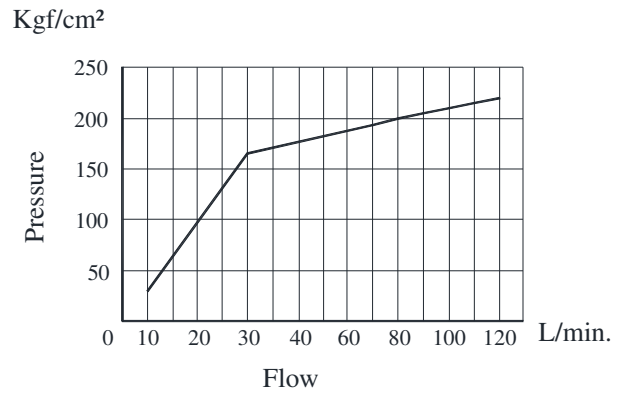


## Minimum Adjusting Pressure

### YCB-06



### YCB-10

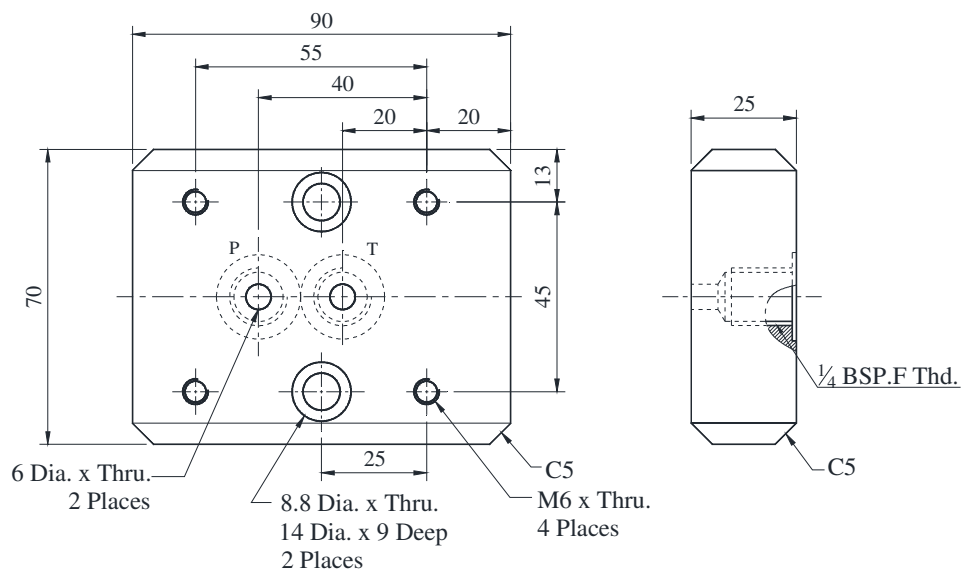


## Sub-plate

Valve Model Numbers	Sub-plate Model Numbers	Thread Size	Approx. Mass Kg.
YCB-06-※-G-※-10	YCBM-06-10	1/4 BSP.F	2.5
YCB-10-※-G-※-10	YCBM-10-10	1/2 BSP.F	3.4

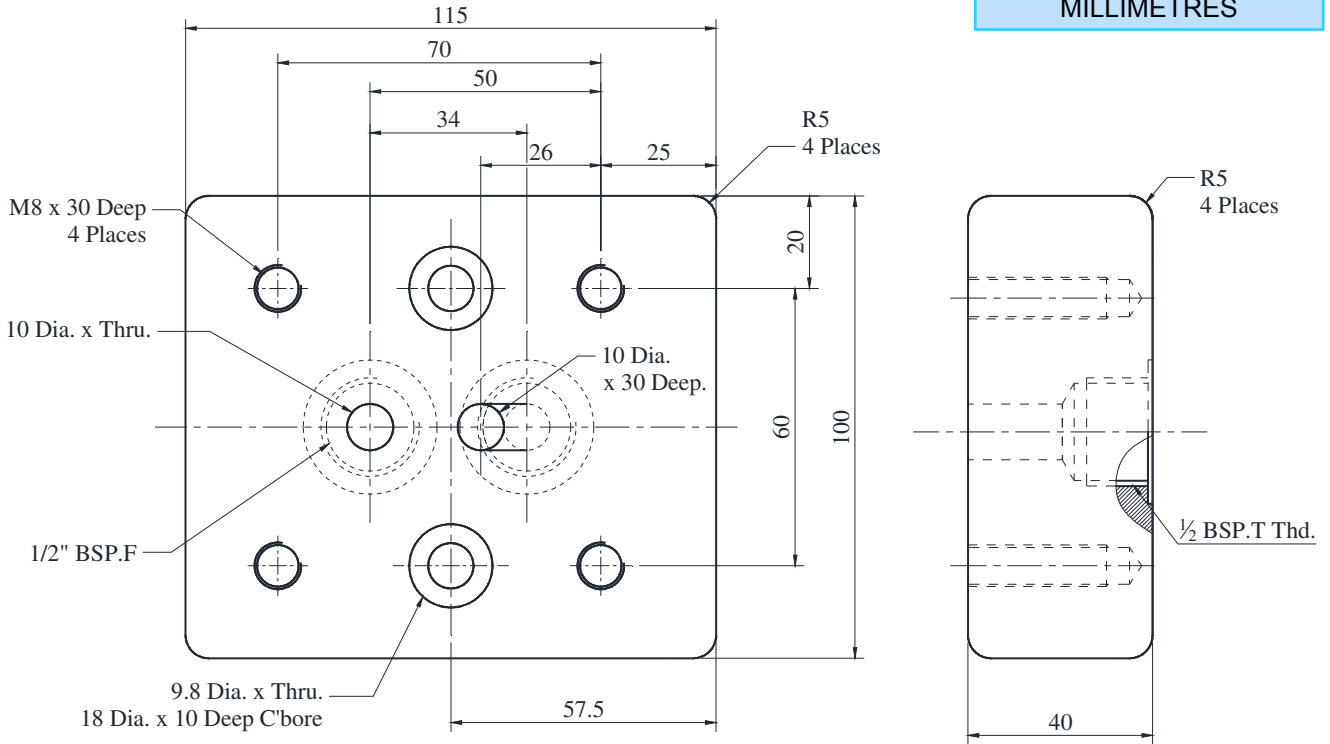
DIMENSIONS IN MILLIMETRES

### Sub-plate: YCBM-06-10



• Sub-plate: YCBM-10-10

DIMENSIONS IN MILLIMETRES



■ Spare Parts List

• YCB-06

• List of Seals

Sl. No.	Name of Parts	Parts Number	Quantity		
			YCB-06	YCB-06-T	YCB-06-G
1	O-Ring	VKH4-1493-0	1		1
2	O-Ring	VKH4-1512-0	1		1
3	O-Ring	SO-NA-P10	1		1
4	Back-Up Ring	SO-BB-P10	1		1
5	O-Ring	VKH4-1507-0	-		2
6	O-Ring	VKH4-1524-0	1		1

Note : When ordering the seals, please specify the seal kit number from the table above.

• List of Seal Kits

Model Numbers	Seal Kit Numbers
YCB-06-※-※-10	KS-YCB-06-10
YCB-06-※-T-10	
YCB-06-※-G-10	KS-YCB-06-G-10

• YCB-10

Sl. No.	Name of Parts	Parts Number	Quantity		
			YCB-10-	YCB-10-T	YCB-10-G
1	O-Ring	VKH4-1474-0	1		1
2	O-Ring	VKH4-1473-0	1		1
3	O-Ring	SO-NA-P10	1		1
4	Back-Up Ring	SO-BB-P10	1		1
5	O-Ring	VKH4-1513-0	-		2
6	O-Ring	VKH4-1524-0	1		1

Note : When ordering the seals, please specify the seal kit number from the table above.

Model Numbers	Seal Kit Numbers
YCB-10-※-※-10	KS-YCB-10-10
YCB-10-※-T-10	
YCB-10-※-G-10	KS-YCB-10-G-10