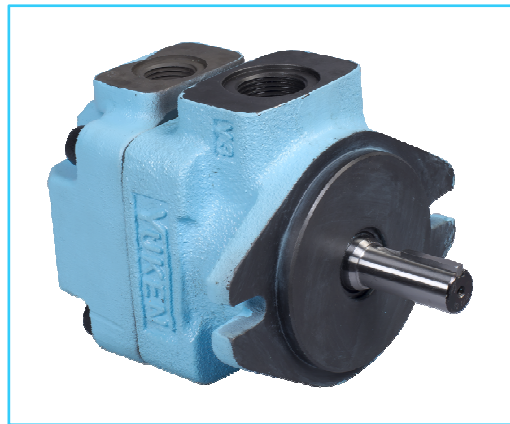
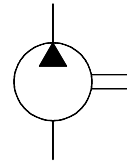


### SVP1 – Series Single Vane Pump

These pumps work as a source of hydraulic power especially for low noise operation. They combine stable performance and robust construction with range of delivery rates.



Graphic Symbol



### Specifications

Model Number	Geometric Displacement cm <sup>3</sup> /rev.	Max. Opr. Pressure Kgf/cm <sup>2</sup>	Output Flow & Input Power kW	Shaft Speed Range r/min.		Mass Kg.	
				Max.	Min.	Flange Mounting	Foot Mounting
SVP1※-3	3.6	250	Refer Page 181 & 182	1800*	750	6.2	7
SVP1※-5	5.4						
SVP1※-7	7.8						
SVP1※-8	8.7						
SVP1※-10	11.6						
SVP1※-13	13.8						
SVP1※-14	14.3						
SVP1※-26	25.8						

\* For speeds above 1500 r/min., consult factory for information.

### Model Number Designation

F	-SVP1	T	-3	-L	-R	A	-10
Special Seals	Series Number	Type of Connection	Nominal Displacement	Type of Mounting	Direction of Rotation	Discharge Port Position	Design Number*
					As Viewed From Shaft End		
<b>F:</b> For Phosphate Ester type Fluids. (Omit if not required)	<b>SVP1</b>	<b>T:</b> Threaded Connection	<b>3</b> <b>5</b> <b>7</b> <b>8</b> <b>10</b> <b>13</b> <b>14</b> <b>26</b>	<b>L:</b> Foot Type  <b>F:</b> Flange Type	<b>R:</b> Clockwise (Normal)  <b>L:</b> Counter-clockwise	(See Drawing) <b>A:</b> Normal (Upward) <b>B:</b> Bottom <b>R:</b> Right <b>L:</b> Left	<b>10</b>

\* Design numbers subject to change from 10 to 19, but installation dimensions remain as shown.

\* For instructions regarding changing the port positions, consult YUKEN INDIA LTD.

### ■ Cartridge Kit Model Number

CSVP1	-3	-R	-10
Model Number	Nominal Displacement	Shaft Rotation	Design No.
CSVP1	3	R: Clockwise (Normal)	10
	5		
	7		
	8		
	10		
	13	L: Counter- Clockwise	
	14		
26			

\* For instructions regarding replacing cartridge kit, consult YUKEN INDIA LTD.

### ■ Spare Parts List

#### ● List of Seals

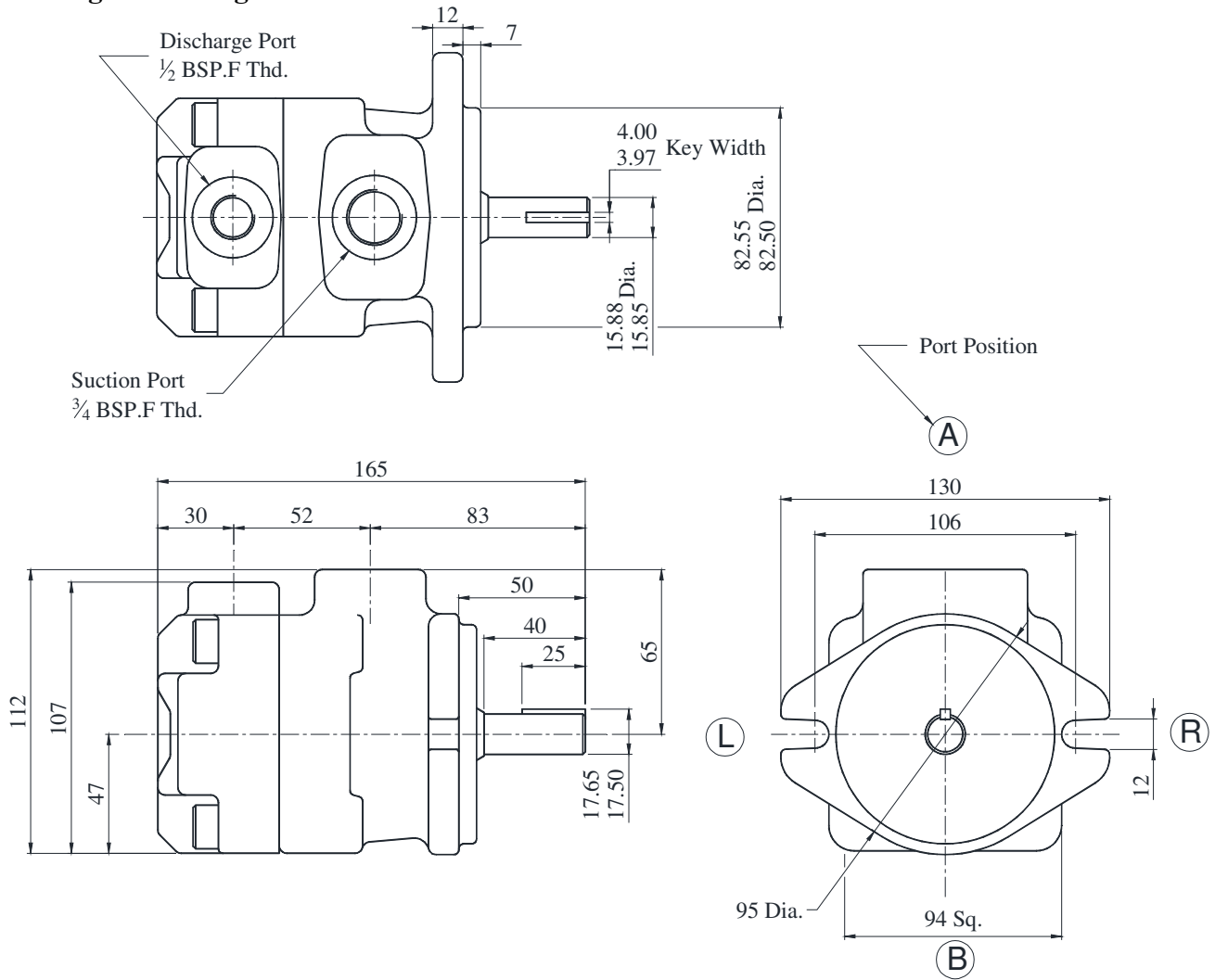
Sl. No.	Name of Part	Part Number	Qty.
1.	O-Ring	SO-NB-G80	1
2.	O-Ring	SO-NB-G60	1
3.	O-Ring	SO-NB-G35	1
4.	Oil Seal	ISD 20307	1

Note: When ordering the seals, please specify the seal kit number KS-SVP1-10.

■ SVP1T-※-F-※※-10

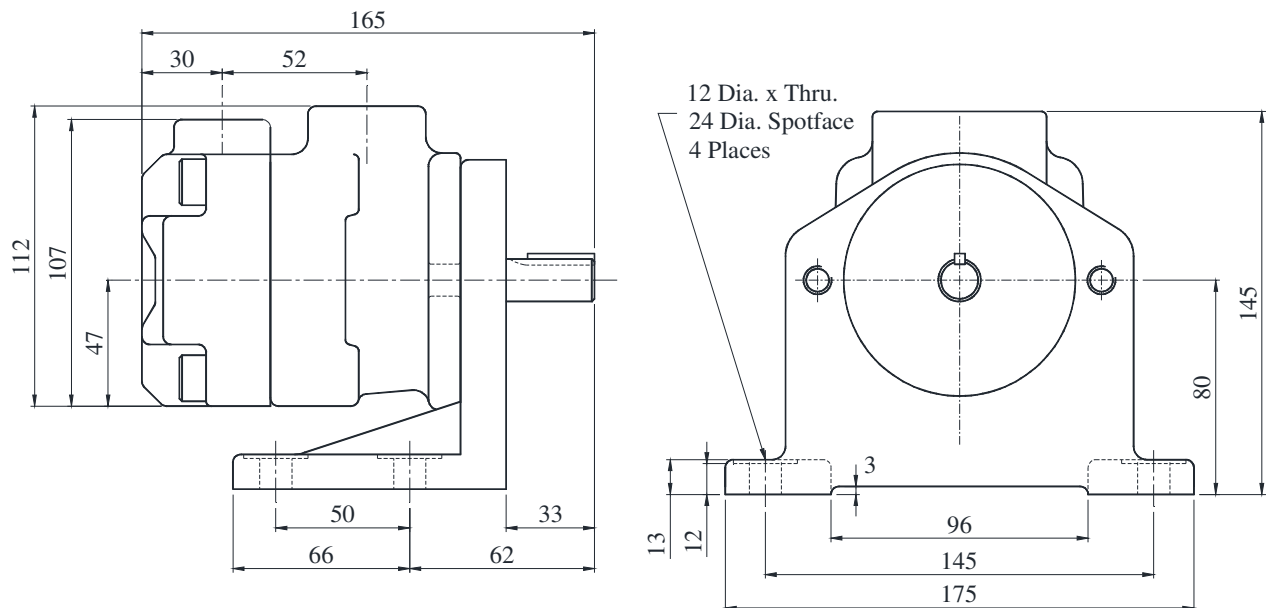
DIMENSIONS IN MILLIMETRES

● Flange Mounting



■ SVP1T-※-L-※※-10

● Foot Mounting

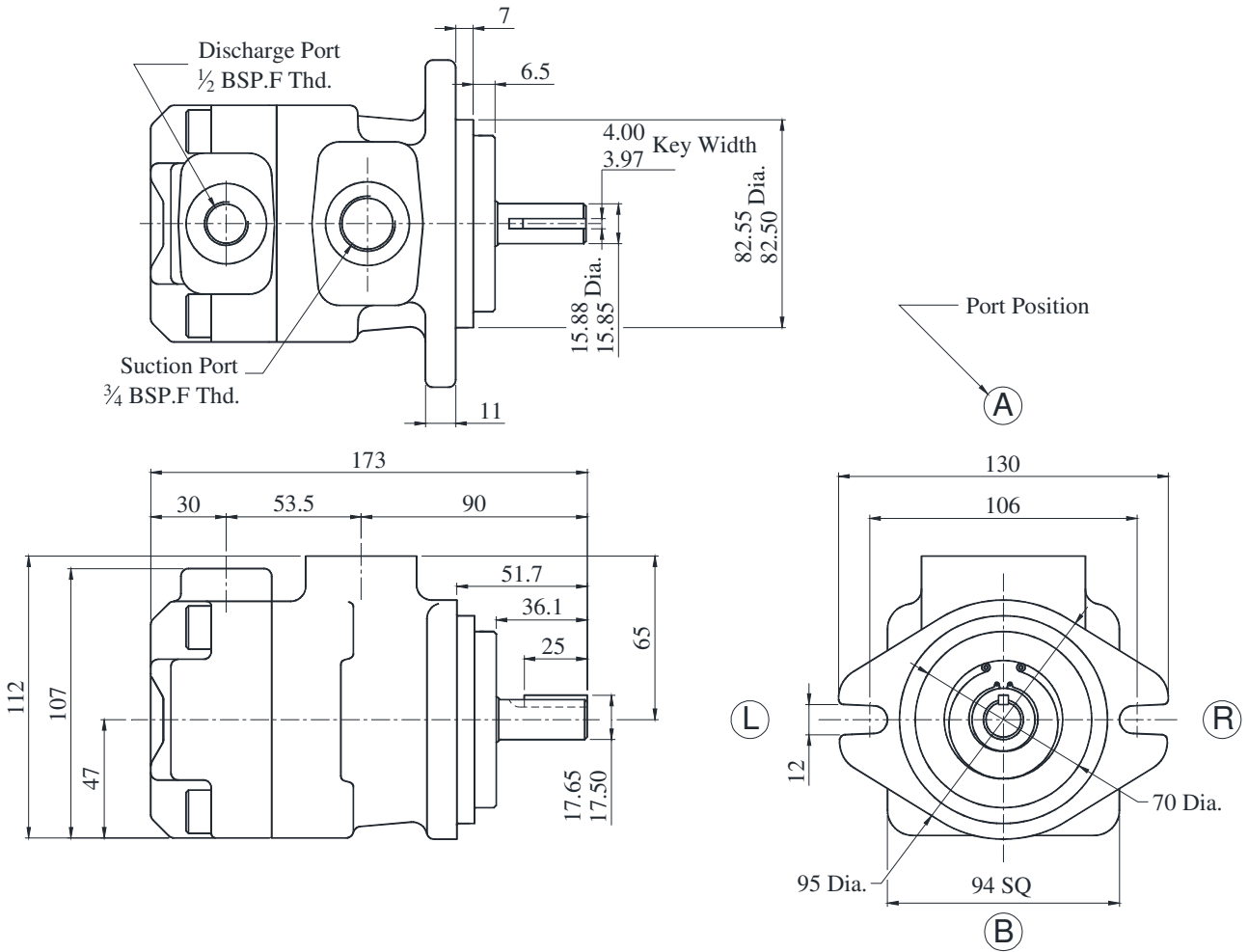


For further dimensions refer Flange Mounting.

SVP1T-26-~~※~~-F-~~※~~※ -10

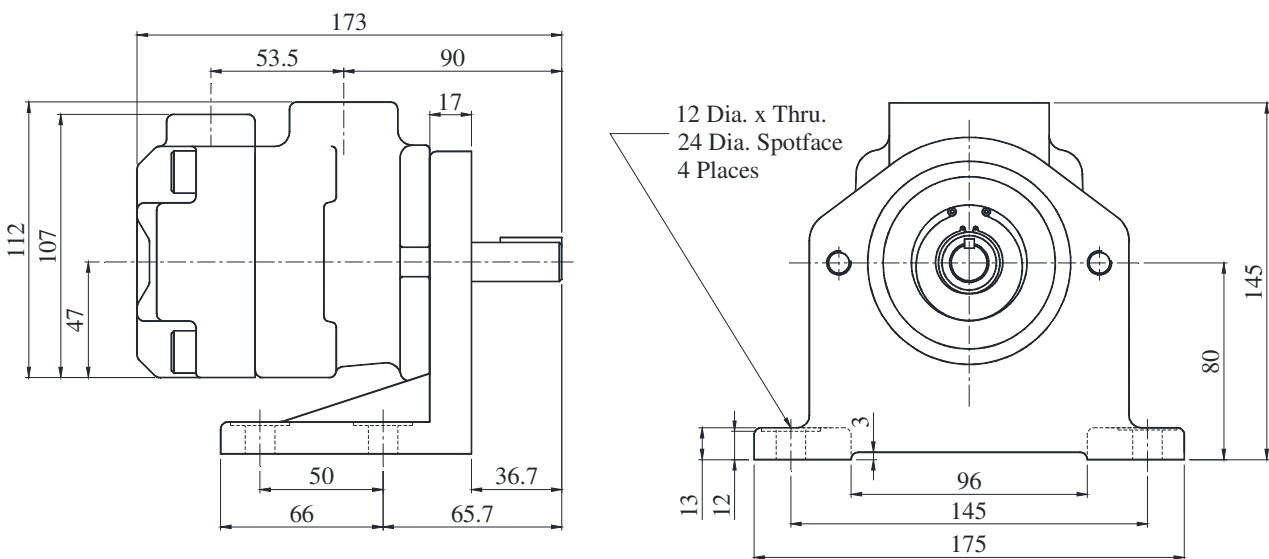
DIMENSIONS IN MILLIMETRES

● Flange Mounting



SVP1T-26-~~※~~-L-~~※~~※ -10

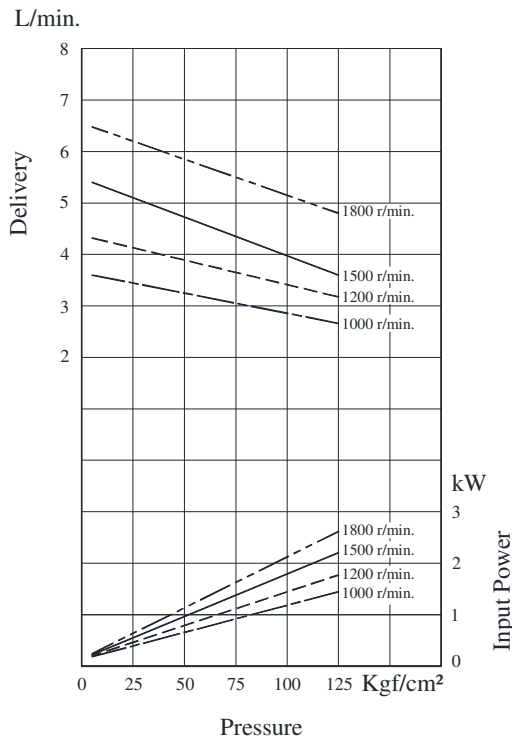
● Foot Mounting



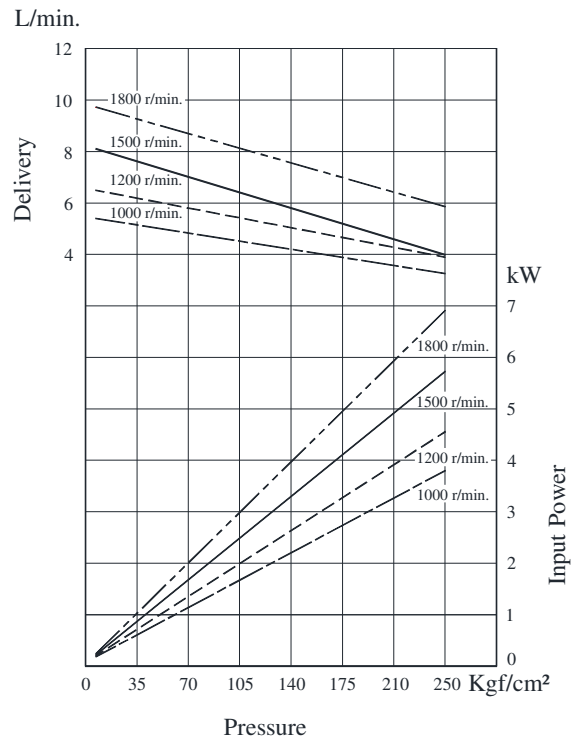
For further dimensions refer Flange Mounting.

Typical Pump Characteristics Oil Viscosity 20 cSt [VG 32, Temp 50<sup>0</sup>C]

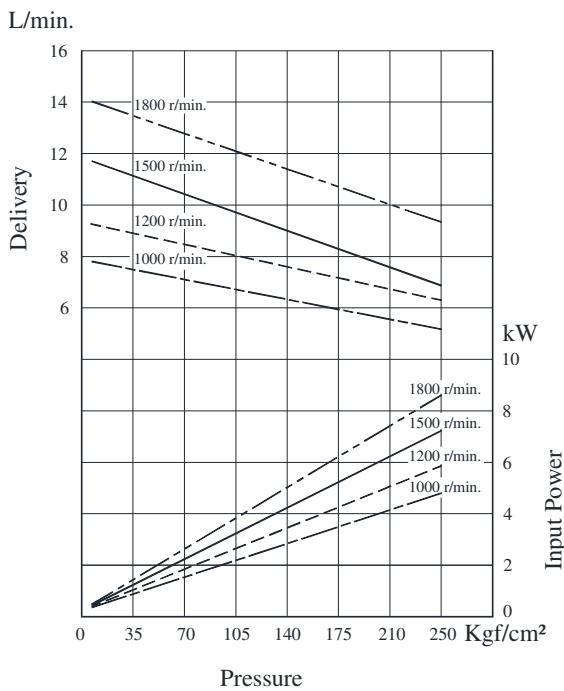
● SVP1 – 3



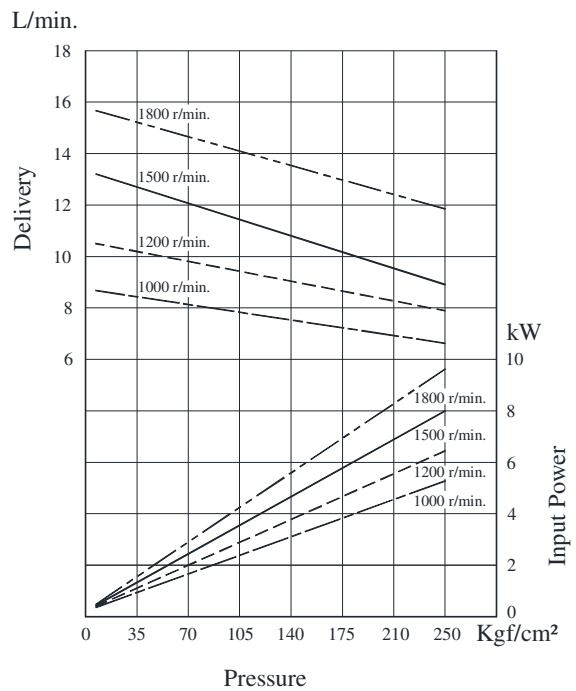
● SVP1 – 5



● SVP1 – 7

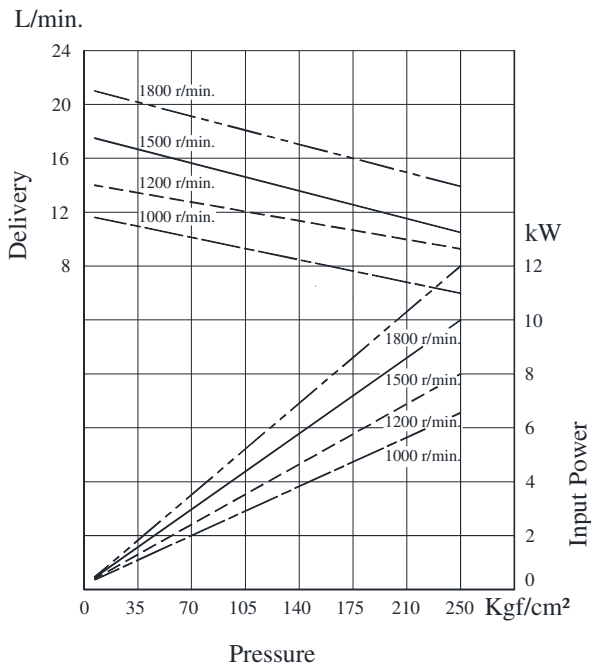


● SVP1 – 8

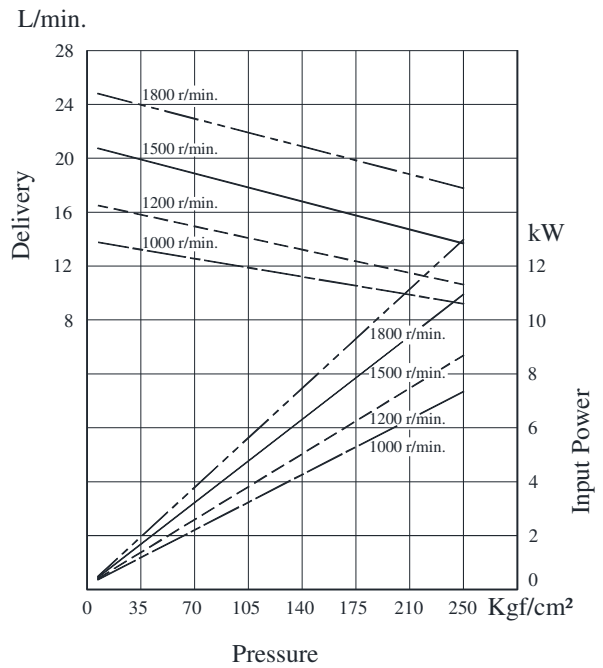


Typical Pump Characteristics Oil Viscosity 20 cSt [VG 32, Temp 50<sup>0</sup>C]

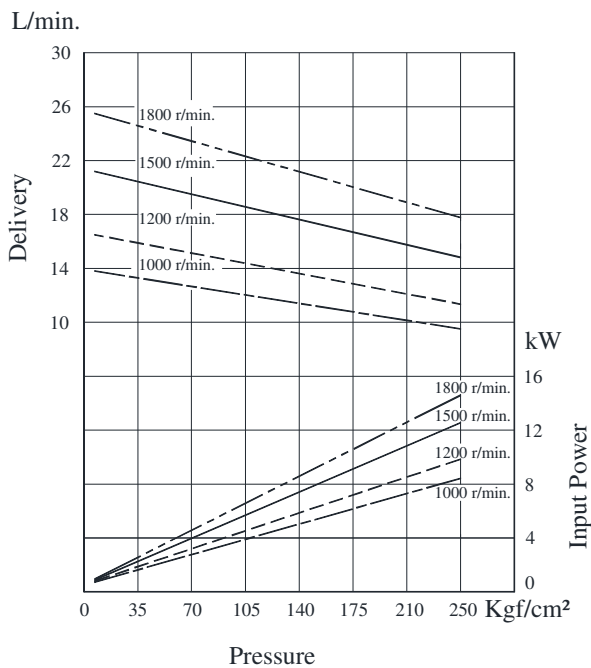
● SVP1 – 10



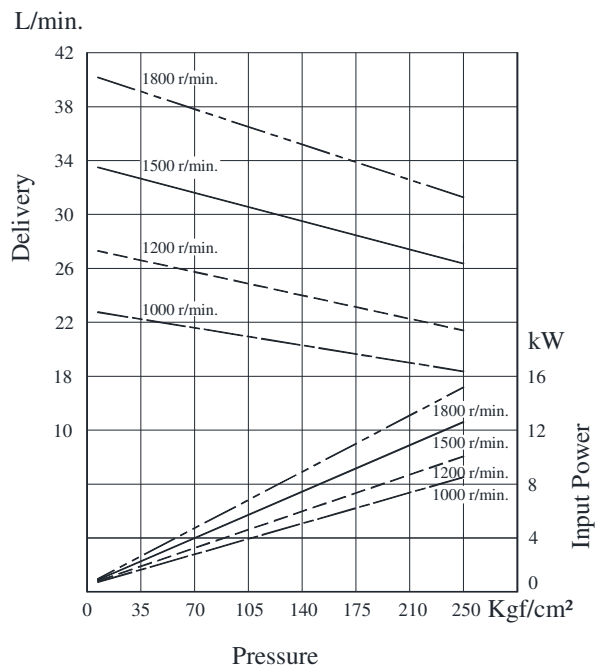
● SVP1 – 13



● SVP1 – 14



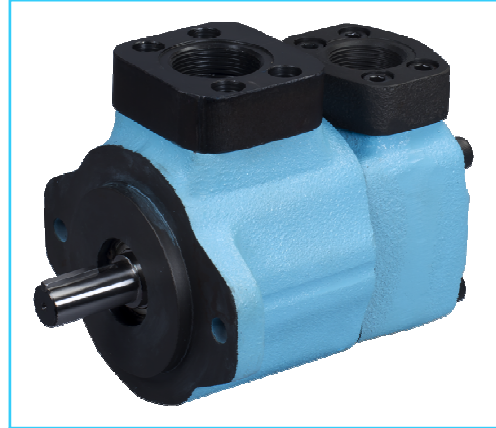
● SVP1 – 26



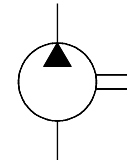
**SVP2 – Series Single Vane Pump**

These pumps have been developed especially for low noise operation. To comply with a wide range of applications, for instance the injection moulding machine industry. We provide a wide range of delivery volumes [10.8 ~ 47 cm<sup>3</sup>/rev.] for the pumps.

The main internal parts of the pumps are built as a cartridge kit. Therefore, maintenance can be easily done by simply changing the cartridges.



Graphic Symbol



**Specifications**

Model Number	Geometric Displacement cm <sup>3</sup> /rev.	Max. Opr. Pressure Kgf/cm <sup>2</sup>	Output Flow & Input Power kW	Shaft Speed Range r/min.		Mass Kg.	
				Max.	Min.	Flange Mounting	Foot Mounting
SVP2*-11	10.4	210	Refer Page 186, 187 & 188	1800*	600	16	18.7
SVP2*-17	16.1						
SVP2*-22	21.7						
SVP2*-25	24.1						
SVP2*-30	29.5						
SVP2*-33	31.7						
SVP2*-38	35.4						
SVP2*-43	40.8						
SVP2*-47	42.6						

\* For speeds above 1500 r/min., consult factory for information.

**Model Number Designation**

F	-SVP2	-L	-F	-11	-R	A	A	-10
Special Seals	Series Number	Type of Mounting	Type of Pipe Connection	Nominal Displacement	Direction of Rotation	Discharge Port Position	Suction Port Position	Design* Number
					As Viewed From Shaft End			
<b>F:</b> For Phosphate Ester type Fluids. (omit if not required)	<b>SVP2</b>	<b>L:</b> Foot Type  <b>F:</b> Flange Type	<b>F:</b> Flange Connection	<b>11</b> <b>17</b> <b>22</b> <b>25</b> <b>30</b> <b>33</b> <b>38</b> <b>43</b> <b>47</b>	<b>R:</b> Clockwise (Normal)  <b>L:</b> Counter-clockwise	(See Drawing) <b>A:</b> Normal (Upward) <b>B:</b> Bottom <b>R:</b> Right <b>L:</b> Left	(See Drawing) <b>A:</b> Normal (Upward) <b>B:</b> Bottom <b>R:</b> Right <b>L:</b> Left	<b>10</b>

\* Design numbers subject to change from 10 to 19, but installation dimensions remain as shown.

\* For instructions regarding changing the port positions, consult YUKEN INDIA LTD.

### Cartridge Kit Model Number

CSVP2	-11	-R	-10
Model Number	Nominal Displacement	Shaft Rotation	Design No.
CSVP2	11	R: Clockwise (Normal)	10
	17		
	22		
	25		
	30	L: Counter- Clockwise	
	33		
	38		
	43		
47			

\* For instructions regarding replacing cartridge kit, consult YUKEN INDIA LTD.

### Flanges

Note: Please refer page no. 747 for flange details.

### Spare Parts List

#### List of Seals

Sl. No.	Name of Part	Part Number	Qty.
1	O-Ring	SO-NA-P41	1
2	O-Ring	SO-NA- G80	1
3	O-Ring	SO-NB-G85	1
4	Backup-Ring	SO-BB-P41	1
5	Backup-Ring	SO-BB-G80	1
6	Oil Seal	ISPD 25388	1

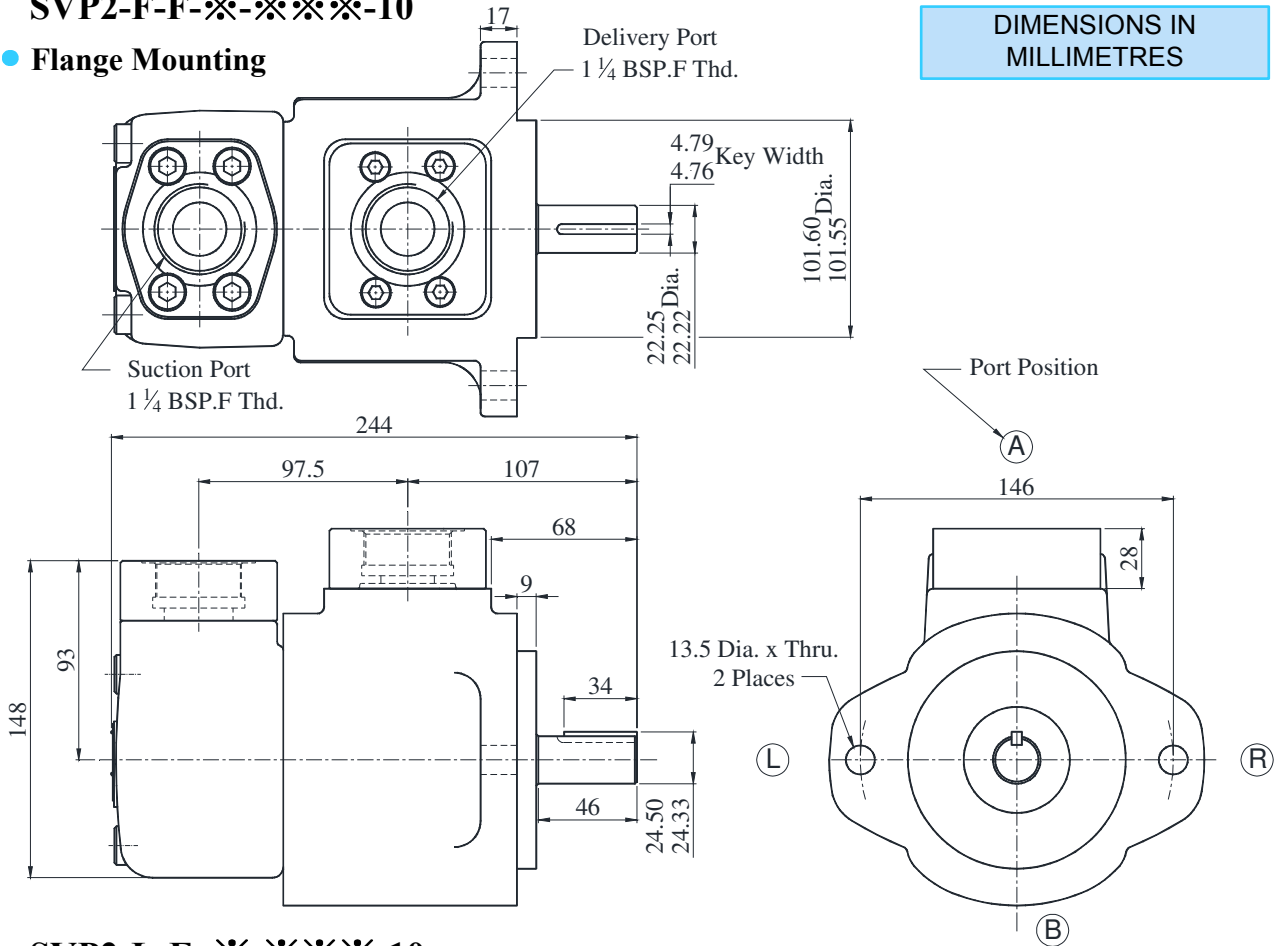
Note: When ordering the seals, please specify the seal kit number KS-SVP2-10.



**SVP2-F-F-※-※※※※-10**

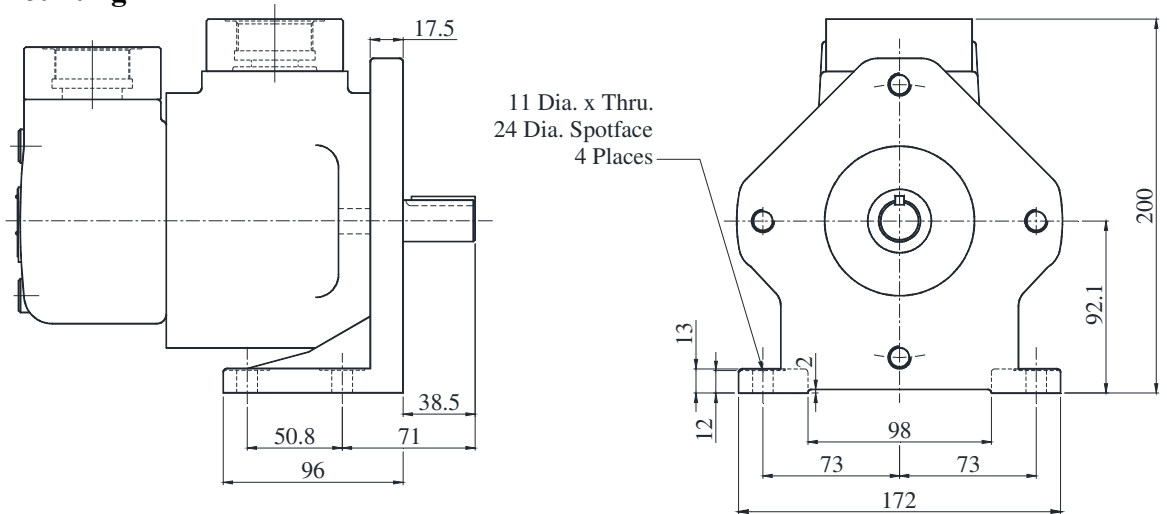
● **Flange Mounting**

DIMENSIONS IN MILLIMETRES



**SVP2-L-F -※-※※※※-10**

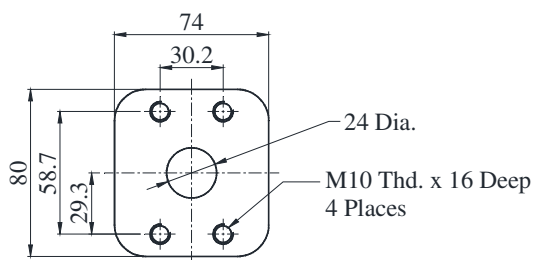
● **Foot Mounting**



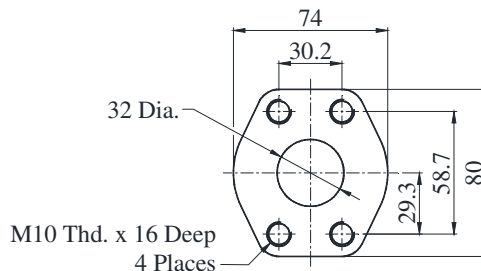
For further dimensions refer Flange Mounting.

**For Reference: Dimensions of Pipe Flange Mounting Surface**

**Discharge Port**

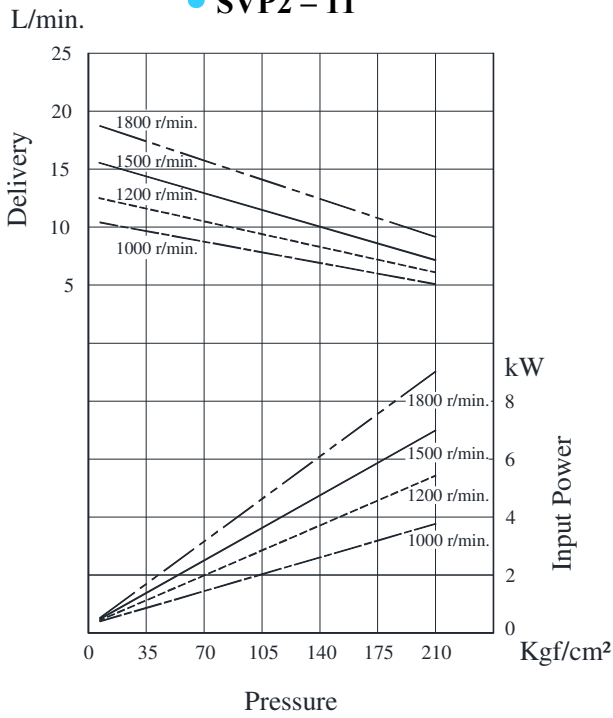


**Suction Port**

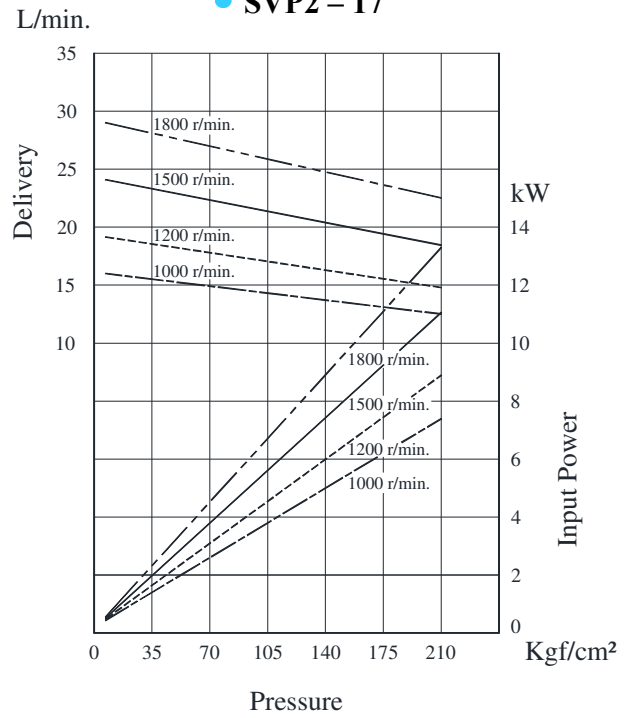


Typical Pump Characteristics Oil Viscosity 20 cSt [VG 32, Temp 50°C]

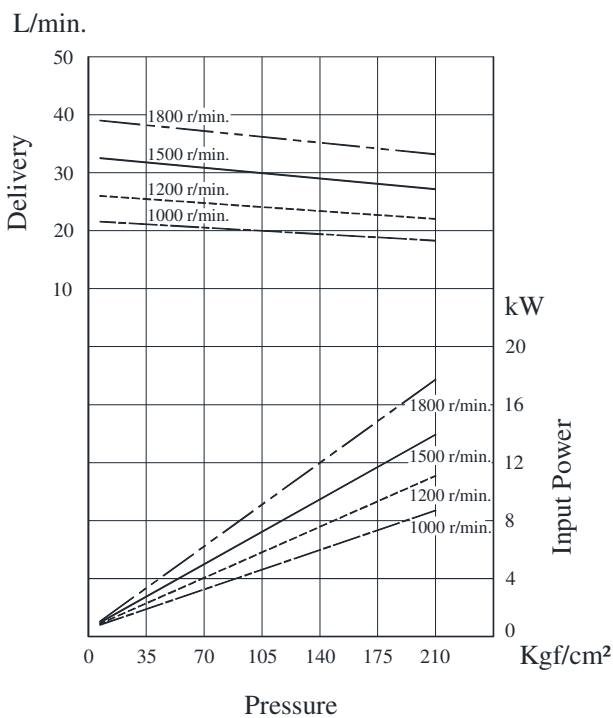
● SVP2 – 11



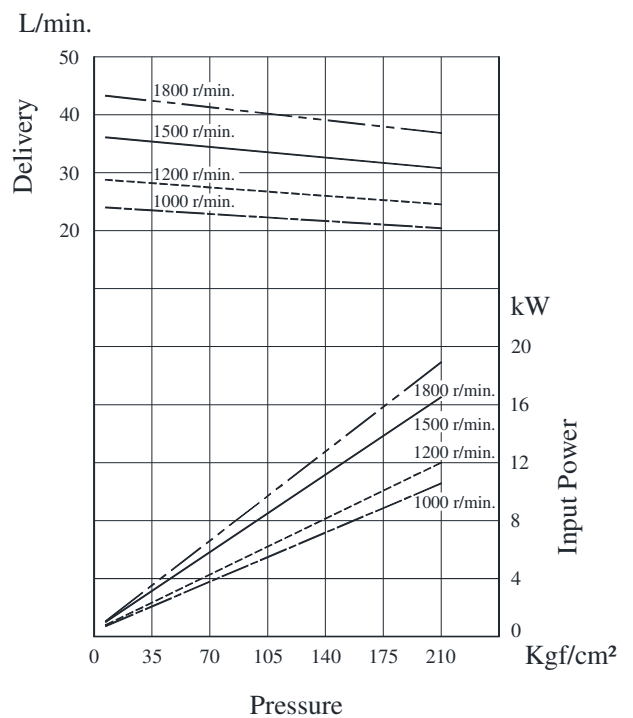
● SVP2 – 17



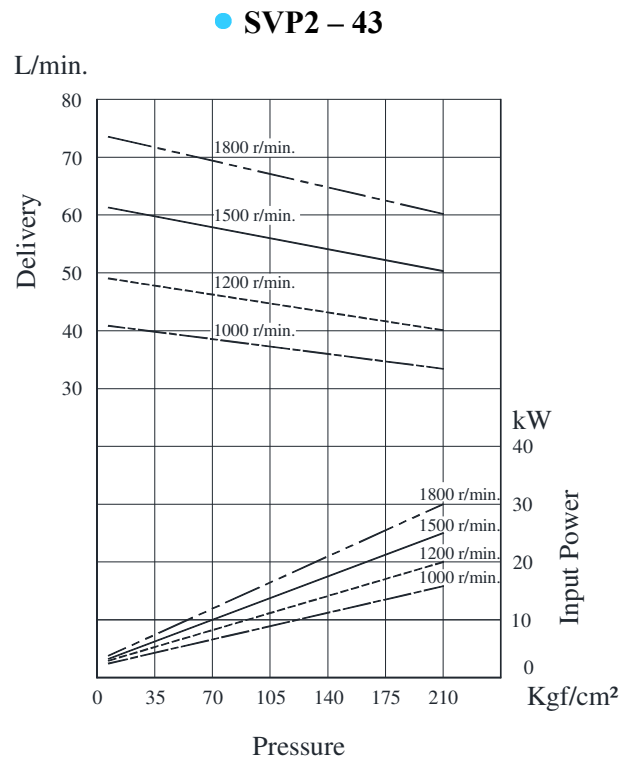
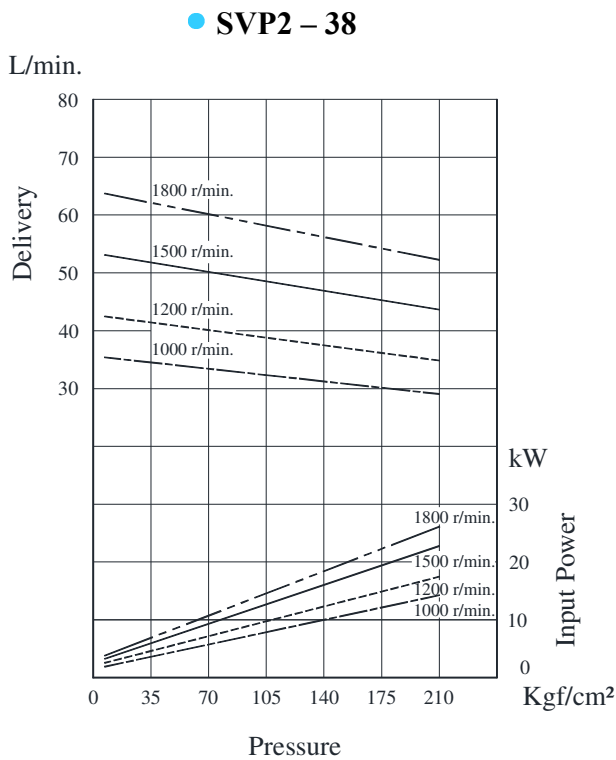
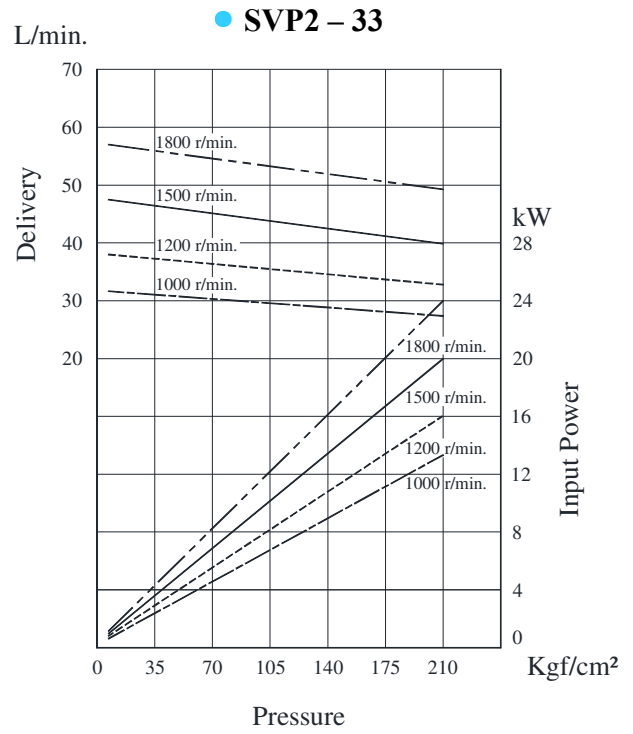
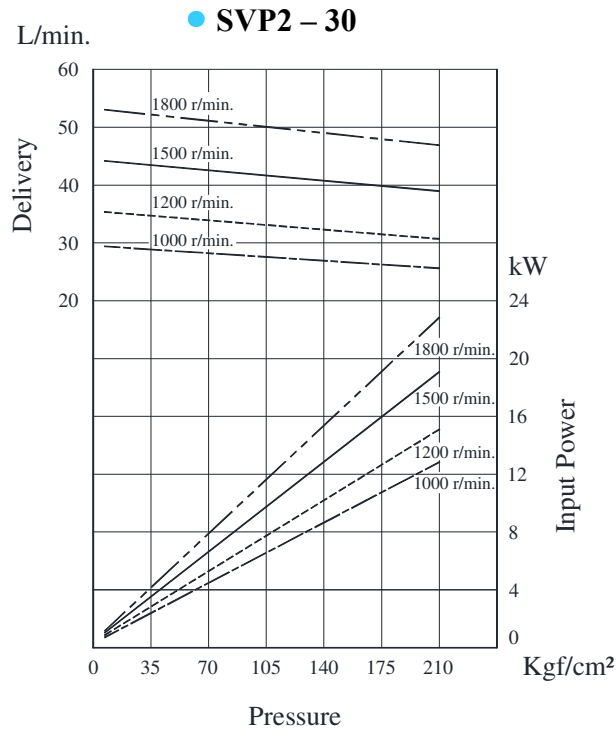
● SVP2 – 22



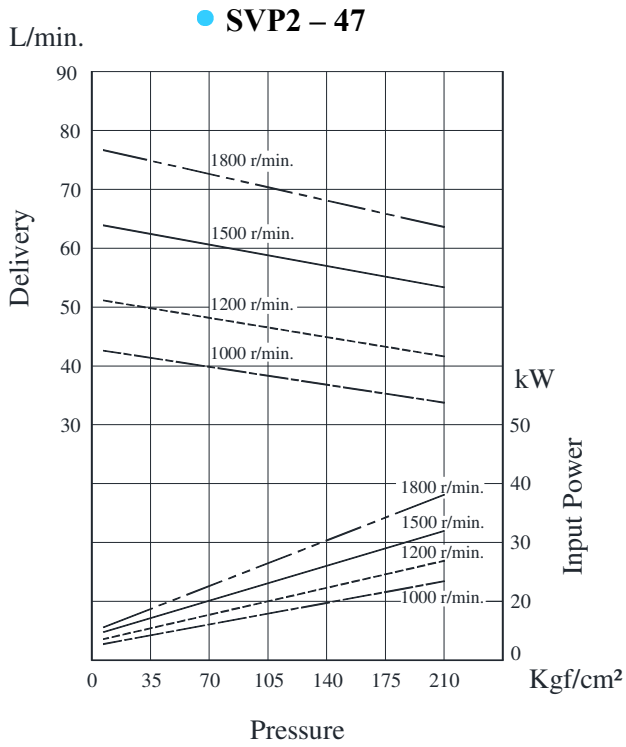
● SVP2 – 25



Typical Pump Characteristics Oil Viscosity 20 cSt [VG 32, Temp 50°C]

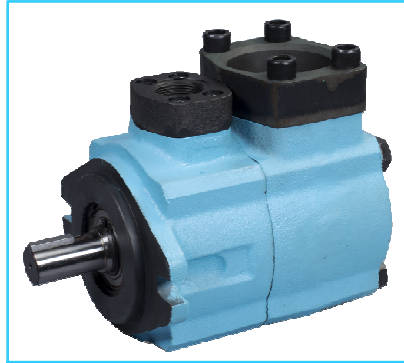


Typical Pump Characteristics Oil Viscosity 20 cSt [VG 32, Temp 50°C]

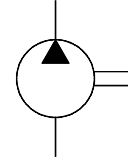


### SVP3 – Series Single Vane Pump

These pumps are widely used as a source of hydraulic power. They combine stable performance and robust construction with a wide range of delivery rates.



Graphic Symbol



### Specifications

Model Number	Geometric Displacement cm <sup>3</sup> /rev.	Max. Opr. Pressure Kg/cm <sup>2</sup>	Output Flow & Input Power kW	Shaft Speed Range r/min.		Mass Kg.	
				Max.	Min.	Flange Mounting	Foot Mounting
SVP3-※-※-50	47	210	Refer Page 192 & 193	1800 *	600	38.5	45.1
SVP3-※-※-58	57						
SVP3-※-※-75	75						
SVP3-※-※-92	92						
SVP3-※-※-117	115						
SVP3-※-※-142	135						

\* For speeds above 1500 r/min., consult factory for information.

### Model Number Designation

SVP3	-L	-F	-50	-R	A	A	-10
Series Number	Type of Mounting	Type of Pipe Connection	Nominal Displacement	Direction of Rotation	Discharge Port Position	Suction Port Position	Design* Number
As Viewed From Shaft End							
SVP3	L: Foot Type	F: Flange Connection	50	R: Clockwise (Normal)	(See Drawing) A: Normal (Upward)	(See Drawing) A: Normal (Upward)	10
	F: Flange Type		58 75 92 117 142				

\* Design numbers subject to change from 10 to 19, but installation dimensions remain as shown.

\* For instructions regarding changing the port positions, consult YUKEN INDIA LTD.

### Cartridge Kit Model Number

CSVP3	-50	-R	-10
Model Number	Nominal Displacement	Shaft Rotation	Design No.
CSVP3	50	R: Clockwise (Normal)	10
	58		
	75		
	92	L: Counter- Clockwise	
	117		
	142		

\* For instructions regarding replacing cartridge kit, consult YUKEN INDIA LTD.

### Flanges

Note: Please refer page no. 747 for flange details.

### Spare Parts List

#### List of Seals

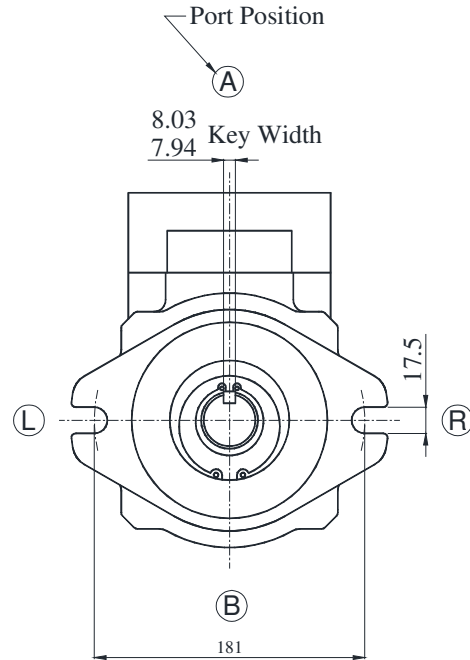
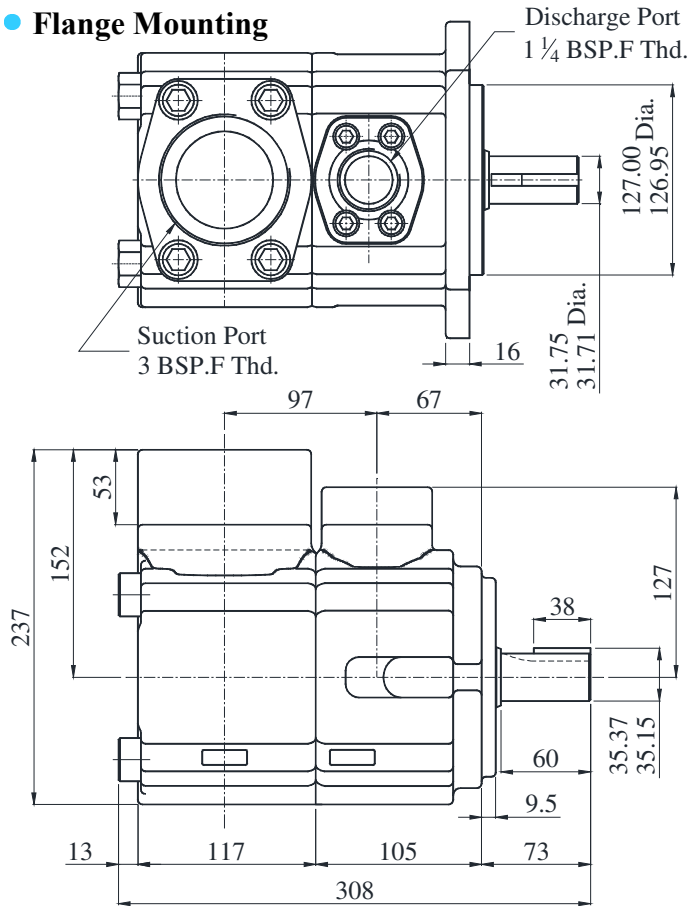
Sl. No.	Name of Part	Part Number	Qty.
1	O-Ring	ARP 568-231	1
2	O-Ring	SO-NA-G120Y	1
3	O-Ring	SO-NB-G125	1
4	Back Up Ring	JIS W1516-G9	1
5	Back Up Ring	SO-BB-G120	1
6	Oil Seal	38 55 8	1

Note: When ordering the seals, please specify the seal kit number KS-SVP3-10.

**SVP3-F-F-※-※※※※-10**

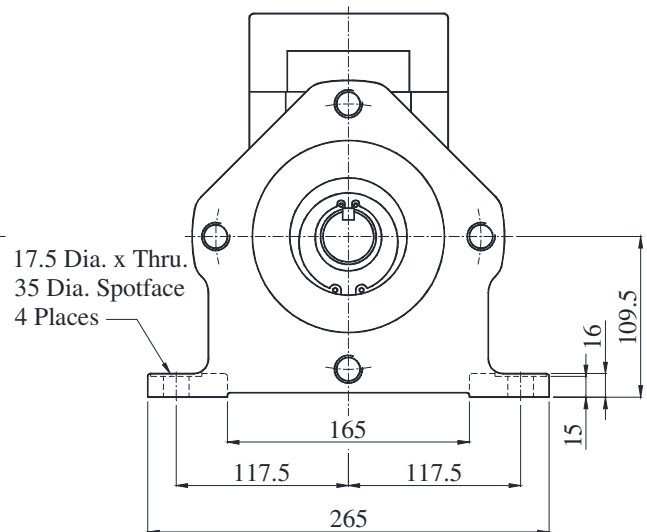
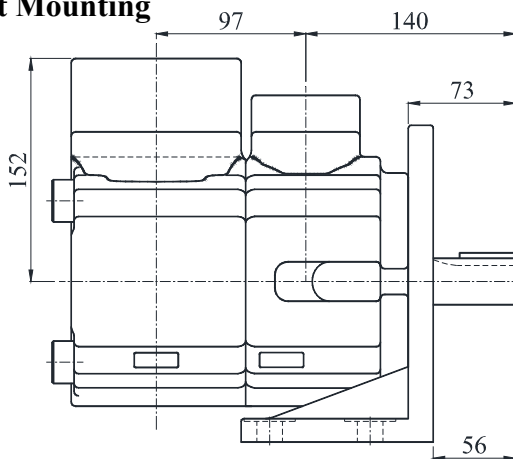
● **Flange Mounting**

DIMENSIONS IN MILLIMETRES



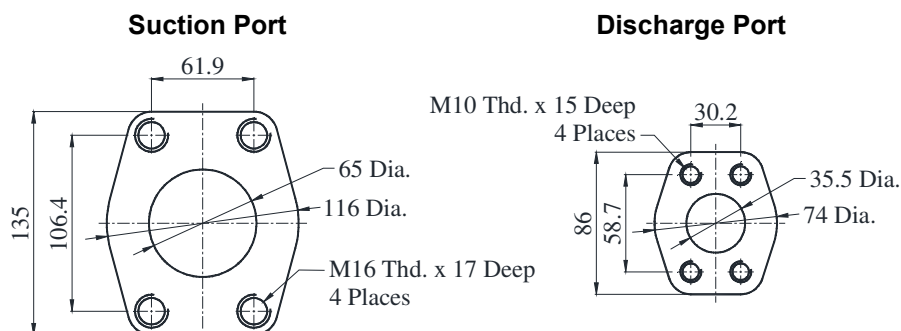
**SVP3-L-F-※-※※※※-10**

● **Foot Mounting**



For further dimensions refer Flange Mounting.

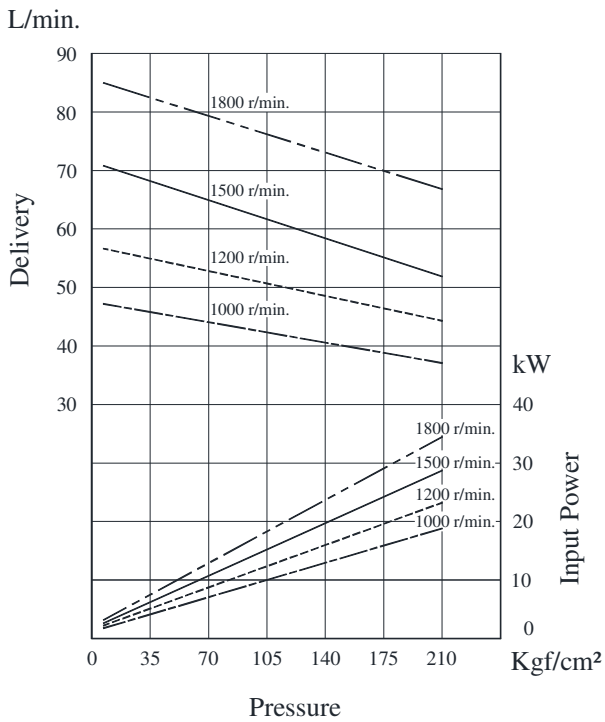
**For Reference:** Dimensions of Pipe Flange Mounting Surface



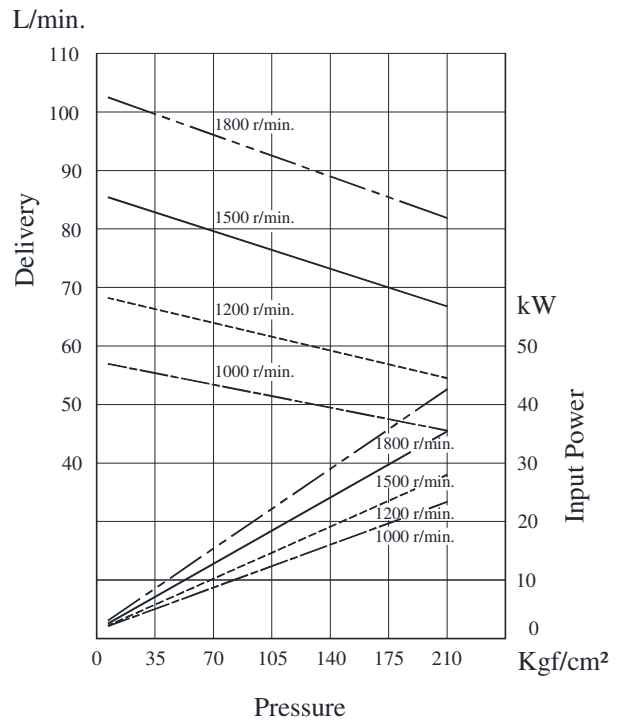
**SVP Series Single Vane Pump**

## Typical Pump Characteristics Oil Viscosity 20 cSt [VG 32, Temp 50<sup>0</sup>C]

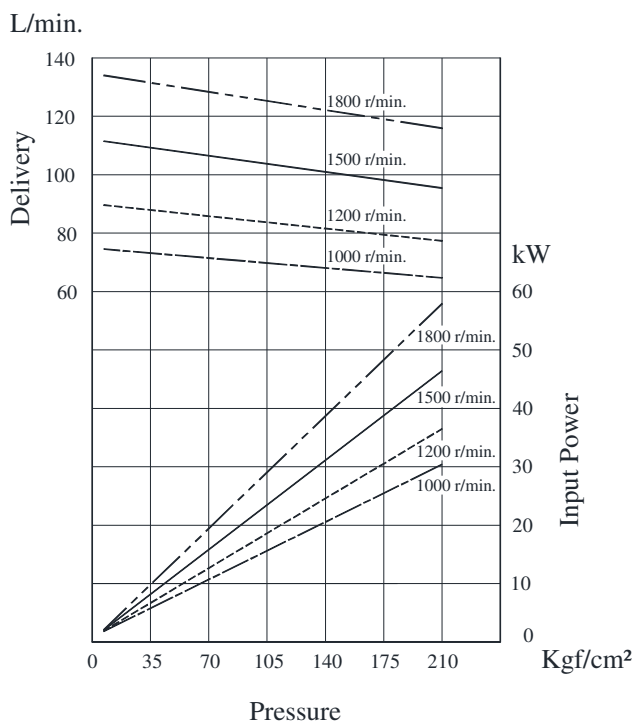
● SVP3 – 50



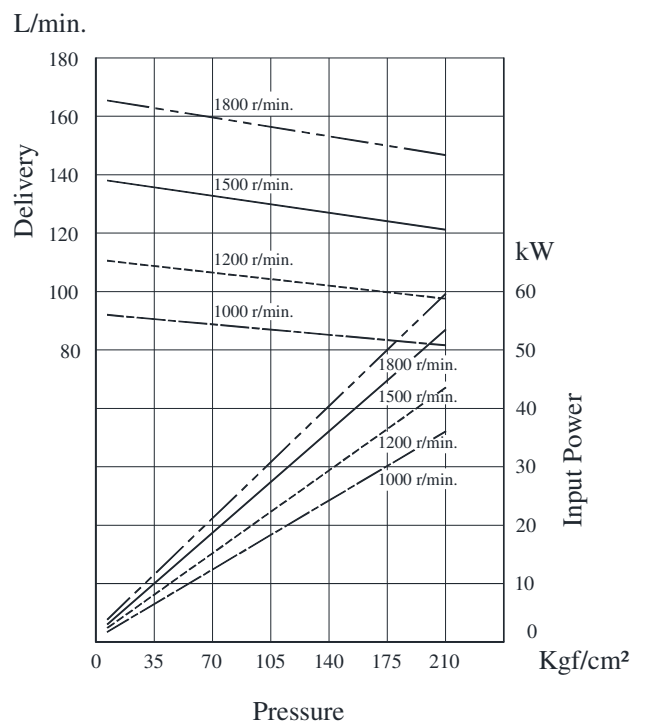
● SVP3 – 58



● SVP3 – 75



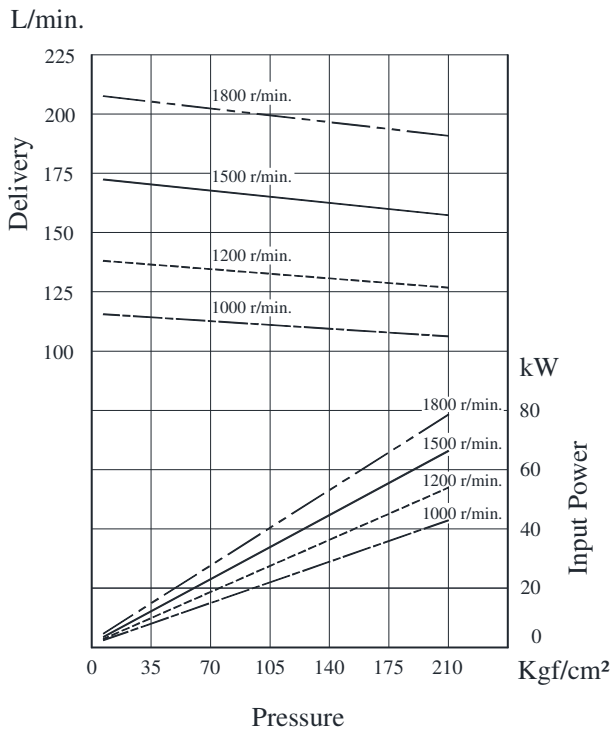
● SVP3 – 92



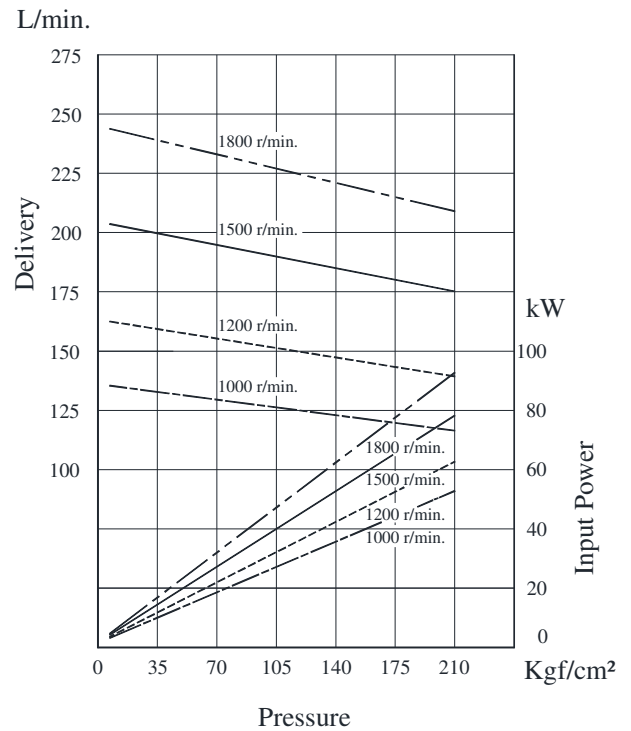


Typical Pump Characteristics Oil Viscosity 20 cSt [VG 32, Temp 50<sup>0</sup>C]

● SVP3 – 117



● SVP3 – 142



■ Cartridge Kit Model Number

Pump Model Numbers	Cartridge Kit Number #
SVP1T-5-※-R※-10	CSVP1-5-R-10
SVP1T-8-※-R※-10	CSVP1-8-R-10
SVP1T-14-※-R※-10	CSVP1-14-R-10
SVP2-※-F-22-R※※-10	CSVP2-22-R-10
SVP2-※-F-33-R※※-10	CSVP2-33-R-10
SVP2-※-F-43-R※※-10	CSVP2-43-R-10
SVP3-※-F-58-R※※-10	CSVP3-58-R-10
SVP3-※-F-92-R※※-10	CSVP3-92-R-10
SVP3-※-F-142-R※※-10	CSVP3-142-R-10

1. For instructions regarding replacing cartridge kit, consult YUKEN INDIA LTD.

# The above table does not include all combinations of cartridges available.

Only a few representative samples are shown.