

Hydro-Electric Pressure Switch

Spring loaded sealed piston construction. Encapsulated design For protection against dirt.

Pressure ranges adjustable up to 40,100,200 & 350 Kg/cm².

Plug-in connector conforming to DIN 43650 / ISO 4400 for electrical connection as Standard feature.

Transparent plug-in connector is available with LED.



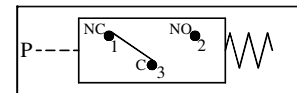
Pressure Setting Ranges

Max. Operating Pressure Kg/cm ²	Pressure Setting Range Kg/cm ²
A : 40	5 to 40
B : 100	12 to 100
C : 200	20 to 200
D : 350	30 to 350

Micro Switch Specification

Resistive Load (A)	Motor Load (A)	Approvals ENEC (A)		(VAC)	(VAC)	
					(A)	(VAC)
6	3	6 (3)	5E4	250	6	125/250

Graphic Symbol



Model Number Designation

F	YS	G	-S	-A	-D12	-N1	-10	-H01			
Special Seals	Series Number	Type of Mounting	Pressure Adjustment	Working Pressure Kg/cm ²	Electrical Connection	Electrical Conduit Connection	Design Number *1	Special Number			
F: *3 Special Seals For Phosphate Ester Type Fluids. (Omit if not required)	YS: YIL Pressure Switch	G: Sub plate Mounting	S: Set Screw	A: 5~40	----	N: Plug in connector without indicator light	10	-			
				A: 5~40 B: 12~100 C: 20~200 D: 30~350				H01 *2			
				A: 5~40				DC: D 12 D 24	N1: Plug in connector with indicator light	10	-
				A: 5~40 B: 12~100 C: 20~200 D: 30~350				AC: A 110 A 240			H01 *2

*1 Design numbers subjected to change . But installation dimensions remains as shown.

*2 H01-Standard Type.

*3 Consult YUKEN for 'F' type models.

Instructions

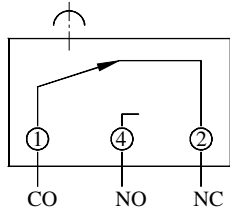
Pressure Adjustment

Turn the pressure adjustment screw slowly clockwise for higher pressures or anti-clockwise for lower pressures.

Mounting Blots

Model Number	Socket Head Cap Screw	Qty.	Bolt Kit Ordering Code
YSG-S-A-***-10	M5 x 50Lg.	2	BK-YSG-01-10
YSG-S-**-***-10H01			

Connection Diagram

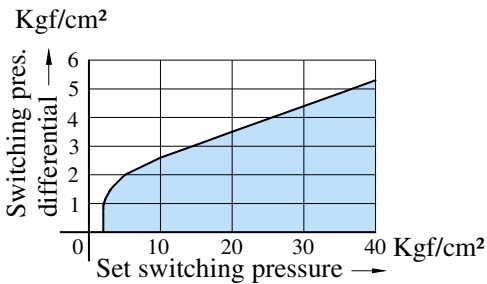


Pressure and Micro-Switch Contacts

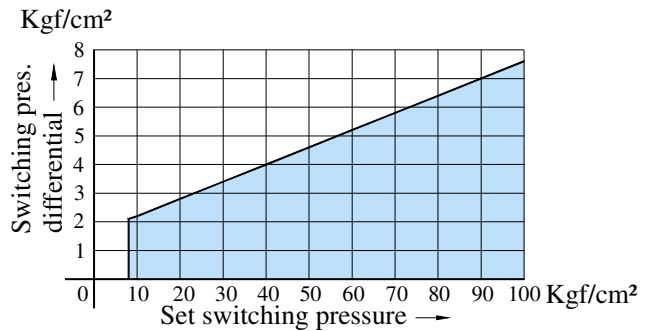
Pressure	Micro Switch Contact Point	Solenoid
Under the Setting Pressure		ENERGIZED
Above the Setting Pressure		ENERGIZED

Switching Pressure Differential

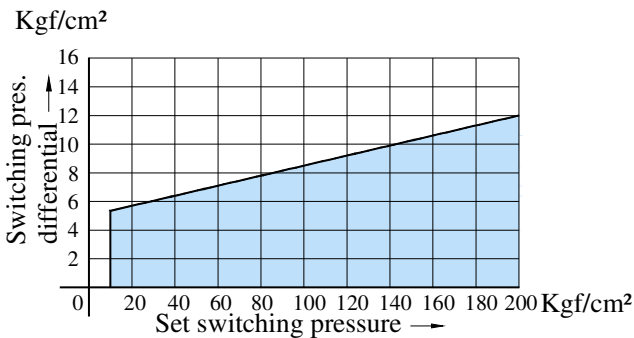
YSG-S-A-*-10*****



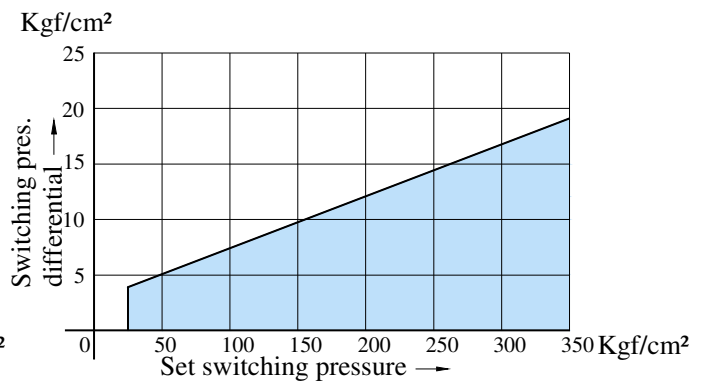
YSG-S-B-*-10H01**



YSG-S-C-*-10H01**



YSG-S-D-*-10H01**



Spare Parts List

List of Seals

SL.No.	Part Name	Name of Part	Qty.
1	SO-NA-P24	O-Ring	1
2	SO-NB-P14	O-Ring	1
3	SO-NB-P9	O-Ring	1
4	OD006005200171A	Step Seal	1

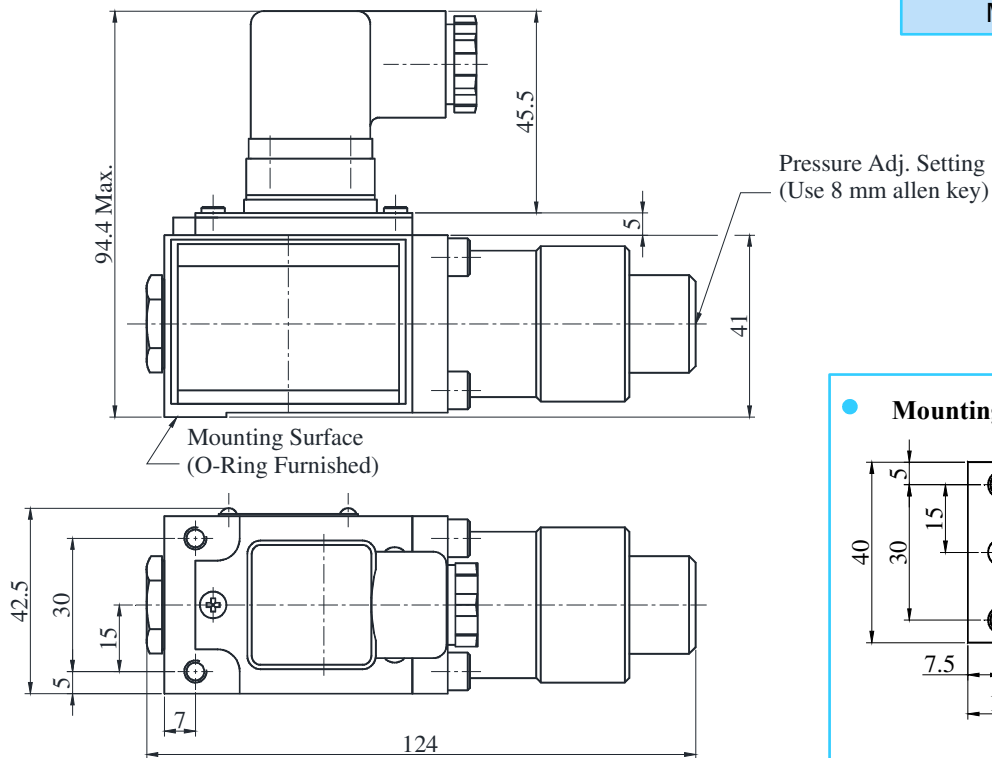
Note : When ordering the seals, please specify the seal kit number KS-YSG-S-10.

DIN Connector

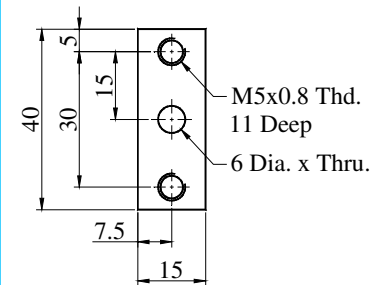
When ordering the DIN Connector as a spare part, for N1 type please specify HD-311/SL-AC or HD-311/SL-DC. For N type please specify HD-311/S.

• YSG-S-A-***-10
 YSG-S-***-10H01

DIMENSIONS IN MILLIMETRES



• Mounting Interface

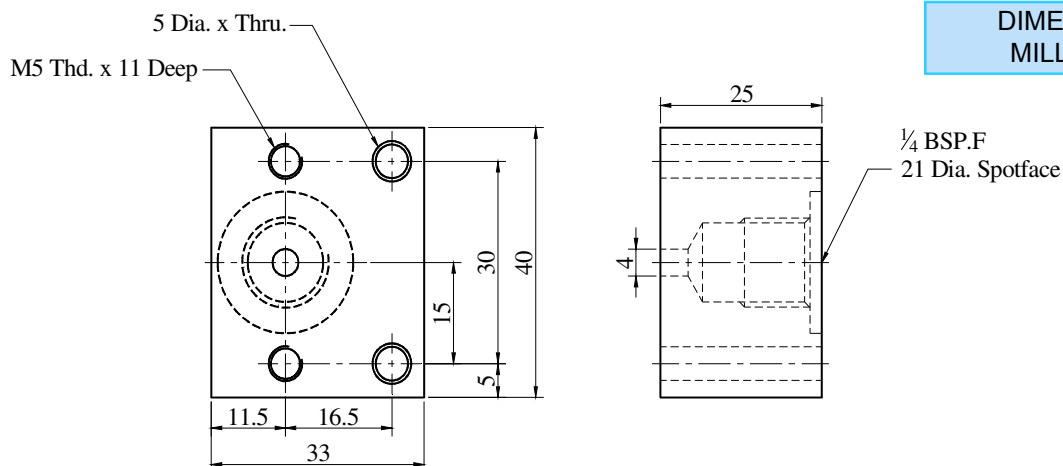


■ Sub-Plate

Model Number	Sub-Plate	Piping Size	Mass Kg.
YSG-S-A-***-10	YSGM-01-10	1/4" BSP.F	0.24
YSG-S-***-10H01			

• Sub-plate: YSGM-01-10

DIMENSIONS IN MILLIMETRES



Note: Sub-Plate to be ordered separately Ordering code for sub plate is YSGM-01-10.