



# BELL HOUSING ASSEMBLY BH

ENGINEERING

1

Ref. No. P06634

Release 02/2005

## Description

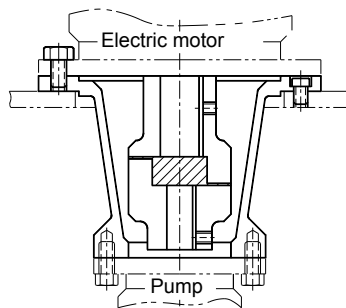
The bell housing series BH are designed for coupling hydraulic pumps having ISO flanges to electric motors having metric flanges.

These bell housing are precisely machined to reduce misalignment of coupled shafts. The correct alignment of the shafts along with the cushioned power transmission through a resilient spider increase the life of the bearings of the pump/motor coupled.

The construction also reduces the noise generation considerably.



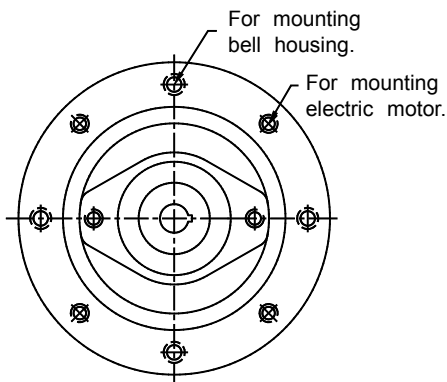
## Section



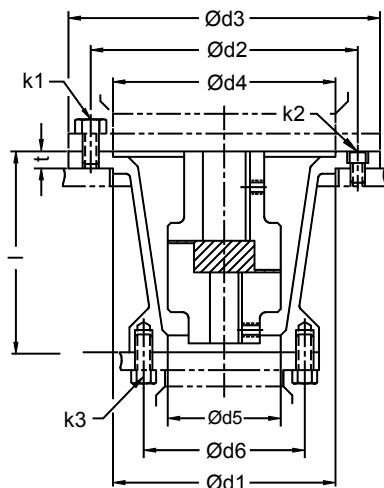
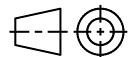
Hydraulic Symbol



## Unit dimension



Dimensions in mm.



| Pump mtg. flange. | Electric motor hp. | Ø d1 | Ø d2 | Ø d3 | Ø d4 | Ø d5  | Ø d6  | t1 | l   | k1 x nos. ( Hex ) | k2 x nos. ( SHCS ) | k3 x nos. ( Hex ) |
|-------------------|--------------------|------|------|------|------|-------|-------|----|-----|-------------------|--------------------|-------------------|
| B1 flange         | 1-2                | 130  | 165  | 200  | 130  | 82.6  | 106.2 | 16 | 135 | M10x4             | M10x4              | M10x2             |
|                   | 3-5                | 180  | 215  | 250  | 180  |       |       | 16 | 145 | M12x4             | M10x4              | M10x2             |
|                   | 7.5-10             | 230  | 265  | 300  | 230  |       |       | 16 | 170 | M12x4             | M10x4              | M10x2             |
|                   | 12.5-30            | 250  | 300  | 350  | 250  |       |       | 20 | 210 | M16x4             | M12x4              | M10x2             |
| B2 flange         | 1-2                | 130  | 165  | 200  | 130  | 101.6 | 146   | 16 | 145 | M10x4             | M10x4              | M12x2             |
|                   | 3-5                | 180  | 215  | 250  | 180  |       |       | 16 | 145 | M12x4             | M10x4              | M12x2             |
|                   | 7.5-10             | 230  | 265  | 300  | 230  |       |       | 16 | 175 | M12x4             | M10x4              | M12x2             |
|                   | 12.5-30            | 250  | 300  | 350  | 250  |       |       | 20 | 210 | M16x4             | M12x4              | M12x2             |
| B3 flange         | 1-2                | -    | -    | -    | -    | 127   | 181   | -  | -   | -                 | -                  | -                 |
|                   | 3-5                | 180  | 215  | 250  | 180  |       |       | 16 | 175 | M12x4             | M10x4              | M16x2             |
|                   | 7.5-10             | 230  | 265  | 300  | 230  |       |       | 16 | 195 | M12x4             | M10x4              | M16x2             |
|                   | 12.5-30            | 250  | 300  | 350  | 250  |       |       | 20 | 225 | M16x4             | M12x4              | M16x2             |

**Polyhydron Pvt. Ltd.**

78-80, Machhe Industrial Estate,  
Machhe, Belgaum - 590 014. INDIA.

Phone : +91-(0)831-2411001

Fax : +91-(0)831-2411002

E-mail : polyhydron@vsnl.com

Internet : www.polyhydron.com



# BELL HOUSING ASSEMBLY BH

ENGINEERING

2

Ref. No. P06634

## Technical specification

- Construction ..... Partially enclosed cast iron housing with flexible coupling.
- Mounting style ..... Flange mounting, factory standard.
- Mounting position ..... Axis of the assembly can be mounted in any direction.
- Pump mounting flange ..... As per ISO 3019/1-1975(E).
- Motor mounting flange ..... As per IS 2223/IEC 72-2.
- Flexible coupling ..... Spider type.
- Working temperature ..... -40 °C to +80 °C

|            |    |         |        |          |           |
|------------|----|---------|--------|----------|-----------|
| Mass ..... | HP | 1 - 2   | 3 - 5  | 7.5 - 10 | 12.5 - 30 |
|            | B1 | 6 Kg.   | 7 Kg.  | 9 Kg.    | 14 Kg.    |
|            | B2 | 7 Kg.   | 8 Kg.  | 10 Kg.   | 15 Kg.    |
|            | B3 | 8.5 Kg. | 10 Kg. | 11.5 Kg. | 19 Kg.    |

## Ordering code

BH | B1 | 7.5 | V210 | 10

Bell housing assembly

|                      |    |
|----------------------|----|
| Pump mounting Flange | B1 |
|                      | B2 |
|                      | B3 |

Design code subject to change. Installation dimensions remain same for design code 10 thru 19.

| Frame size ( mm ) | Electric motor ( hp ) |
|-------------------|-----------------------|
| 80                | 1                     |
| 90 S              | 1.5                   |
| 90 L              | 2                     |
| 100 L             | 3                     |
| 112 M             | 5                     |
| 132 S             | 7.5                   |
| 132 M             | 10                    |
| 160 M             | 12.5                  |
| 160 L             | 20                    |
| 180 M             | 25                    |
| 180 L             | 30                    |

| Pump couplings for low pressure bell housings |       |       |        |
|---|-------|-------|--------|
| Make  | B1    | B2    | B3     |
| Vickers                                       | V210  | V30   | 35V    |
|   |       | 25V   |        |
| Dowty   | OP    | 2P    | 3P     |
|   | 1P    |       |        |
| Yuken   | PVR1T | PVR50 | PVR150 |

\* Note : Customer has to clearly specify the model code and make of the pump. For eg. V210 Vickers.