



A Polyhydron Group Company

PILOT OPERATED CHECK VALVE MODULAR CONSTRUCTION

Model : CIM06 **

Ref. No. D 05975

Release: 11 / 2020

ENGINEERING - 1 of 2

Description

Modular pilot operated check valves series CIM06** provide pressure holding facility on their service ports A1 and B1.

These valves are also available with pilot check facility on either A or B port. The valve opens and allows free return flow, when the other working port is pressurized.

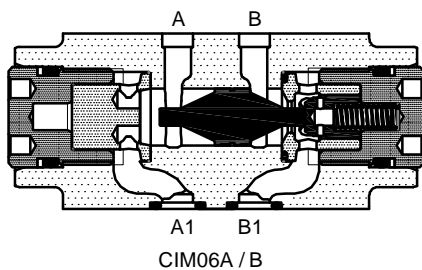
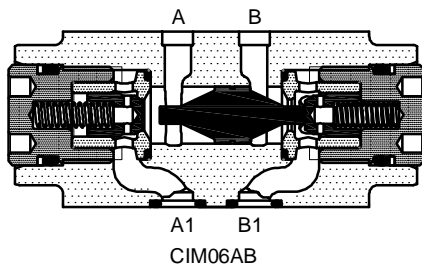
The valve is not suitable for holding pressure on rod end side of Double acting cylinders, where area ratio (Bore area : Annulus area) is equal to or greater than 2.6.

The modular construction facilitates use of these valves in a vertical stack, eliminating need of piping.

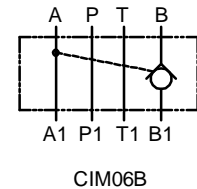
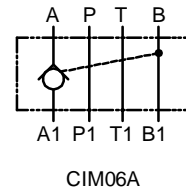
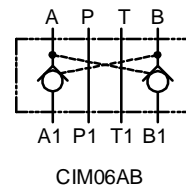
The interface conforming to ISO 4401-AB-03-04-A, IS 10187, DIN24340.



Section



Hydraulic symbol



Technical specifications

Construction	:	Modular, Seat type, Internally pilot operated.
Mounting style	:	Modular type conforming to ISO 4401-AB-03-04-A, IS 10187, DIN24340.
Mounting position	:	Optional.
Flow direction	:	Free flow from A to A1 and / or from B to B1.
	:	Piloted flow in opposite direction.
Cracking pressure	:	1, 3 or 5 bar.
Working pressure	:	315 bar for all Ports.
Area ratios	:	Pilot piston : Poppet seat = 2.6 : 1
Hydraulic medium	:	Mineral oil.
Temperature range	:	-20°C to + 80°C.
Viscosity range	:	10 cSt to 380 cSt.
Fluid cleanliness required	:	ISO 4406 20/18/15 or better.
Max. flow handling capacity	:	40 l/min.
Mass approx.	:	0.9 Kg.

polyhydron pvt. ltd.

78-80, Machhe Industrial Estate,
Machhe, Belgaum - 590 014. INDIA.

Phone : +91-(0)831- 2411001
Fax : +91-(0)831- 2411002
E-mail : polyhydron@gmail.com
Website : www.polyhydron.com

