



A Polyhydron Group Company

PRESSURE CONTROL MODULE PCM 20-16

ENGINEERING

1 / 4

Ref. No. D04902

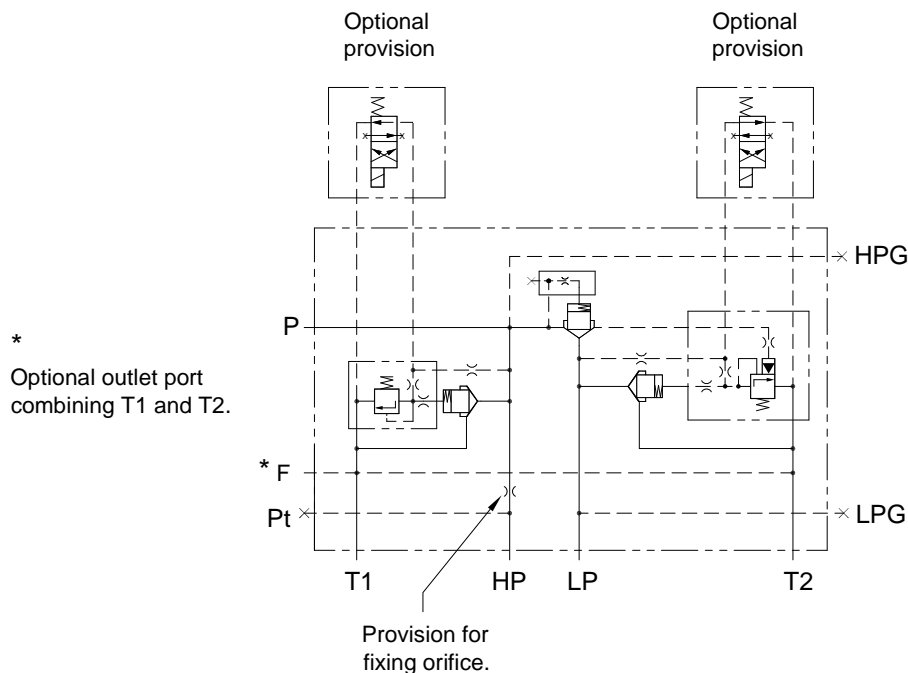
Release 01/2014

Description

Designed to control double pumps of Hi-Low system.
Unloads low pressure pump when system pressure rises above the pressure set on Unloader valve.
Relieves high pressure pump when system pressure reaches the value. Solenoid unloading facility available as an option.



Hydraulic symbol



Connection details :

HP	----	High pressure pump connection.
LP	----	Low pressure pump connection.
P	----	Out-let connection.
HPG	----	Gauge connection on high pressure pump line.
LPG	----	Gauge connection on low pressure pump line.
Pt	----	Pilot pressure connection (Optional).
T1	----	Tank connection of high pressure relief valve.
T2	----	Tank connection of low pressure unloading valve.
F	----	Provision for Filter port

Polyhydron Pvt. Ltd.
78-80, Machhe Industrial Estate,
Machhe, Belgaum - 590 014. INDIA.

Phone : +91-(0)831-2411001
Fax : +91-(0)831-2411002
E-mail : polyhydron@gmail.com
Website : www.polyhydron.com



A Polyhydron Group Company

PRESSURE CONTROL MODULE PCM 20-16

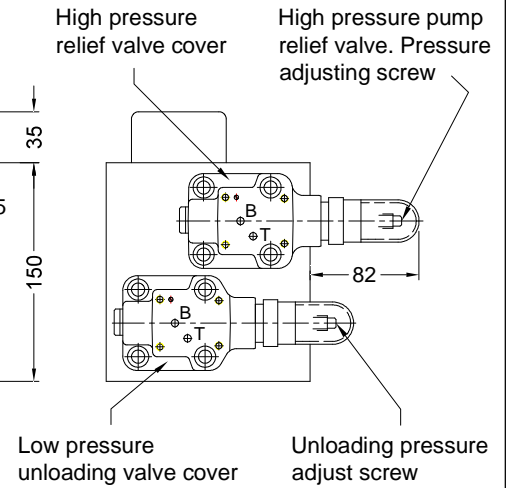
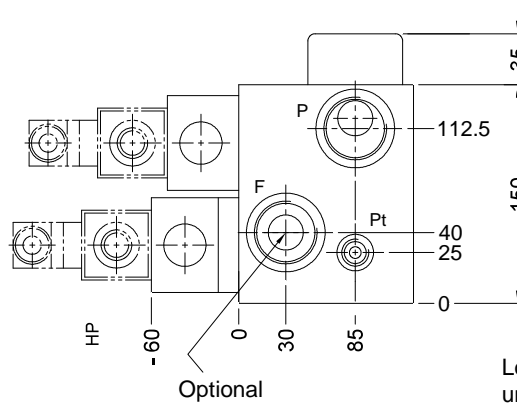
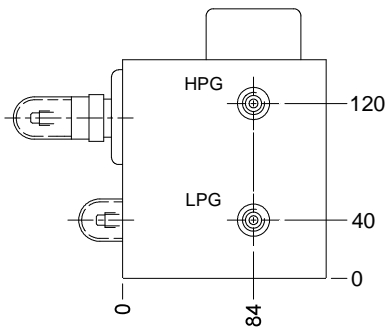
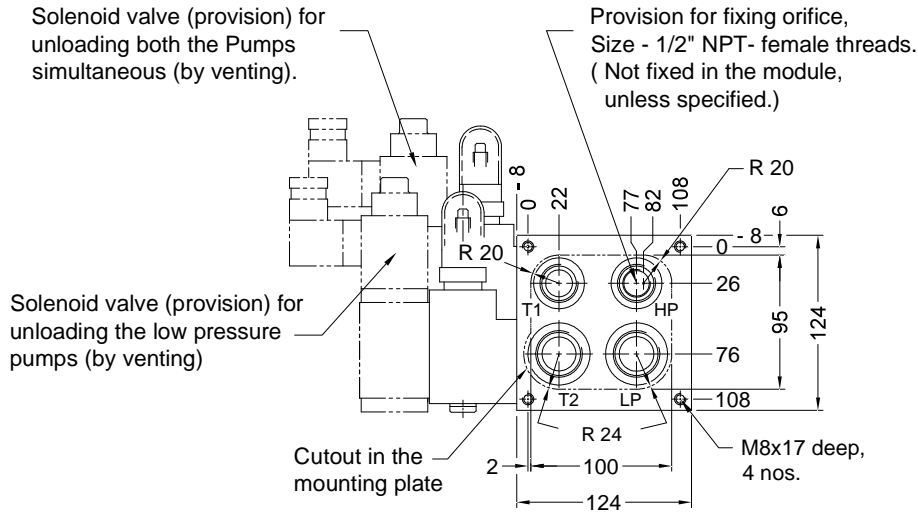
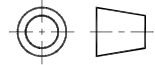
ENGINEERING

2 / 4

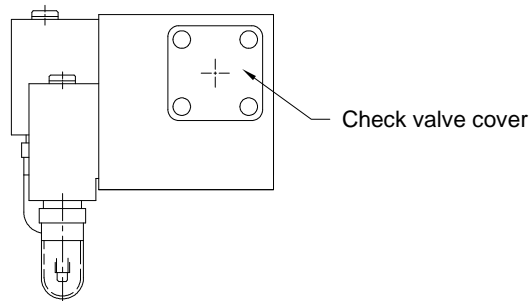
Ref. No. D04902

Unit dimensions

Dimensions in mm.



Port	Details
HP	- G3/4
LP	- G1
P	- G1-1/4
Pt	- G1/4
HPG	- G1/4
LPG	- G1/4
T1	- G3/4
T2	- G1
F	- G1-1/4





A Polyhydron Group Company

PRESSURE CONTROL MODULE PCM 20-16

ENGINEERING

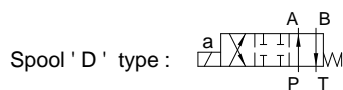
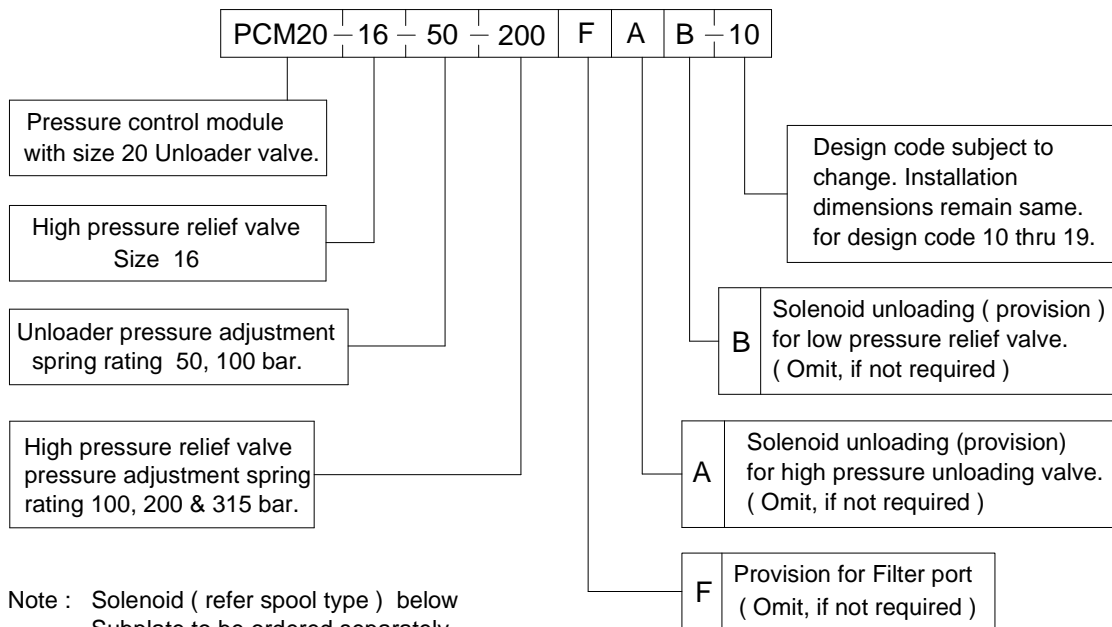
3 / 4

Ref. No. D04902

Technical specifications

Construction PCM 20/16	Two stage poppet type high pressure relief valve. Two stage poppet type low pressure unloading valve.							
Mounting	Threaded body (Factory standard)							
Mounting position	Optional							
Flow direction	As per hydraulic symbol.							
Operating pressure	For low pressure pump 50 and 100 bar. For high pressure pump port 100, 200, 315.							
Hydraulic medium	Mineral oil.							
Viscosity range	10 cSt to 380 cSt.							
Fluid temperature range	-20°C to +70°C.							
Fluid cleanliness requirement	ISO 4406 20/18/15 or better.							
Flow handling capacity	<table border="1" style="width: 100%; border-collapse: collapse; text-align: center;"> <thead> <tr> <th style="width: 33%;">Model</th> <th style="width: 33%;">High pressure max.</th> <th style="width: 33%;">Low pressure max.</th> </tr> </thead> <tbody> <tr> <td>PCM 20/16</td> <td>100 l/min</td> <td>160 l/min</td> </tr> </tbody> </table>		Model	High pressure max.	Low pressure max.	PCM 20/16	100 l/min	160 l/min
Model	High pressure max.	Low pressure max.						
PCM 20/16	100 l/min	160 l/min						
Mass	10.5 kg. APPROX.							

Ordering code



All rights reserved.
Subject to revision.



A Polyhydron Group Company

PRESSURE CONTROL MODULE
PCM 20-16

ENGINEERING

4 / 4

Ref. No. D04902