



PRESSURE CONTROL MODULE
PCM 30-16
Model : PCM3016*****

Ref. No. D 04399
 Release 02 / 2024
 ENGINEERING - 1 of 3

A Polyhydon Group Company

Description

Design to control double pumps of Hi-Low system.

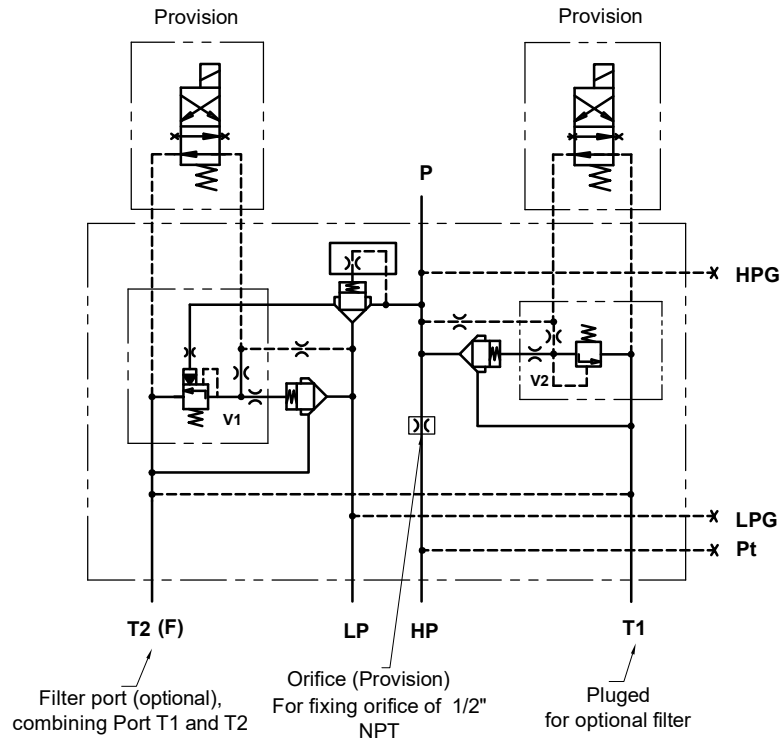
Unloads low pressure pump, when system pressure rises above the pressure set on Unloader valve.

Relieves high pressure pump, when system pressure reaches Relief valve set pressure.

Solenoid unloading facility available as an option.



Hydraulic symbol :



Connection Details :

HP	:	Inlet Port for high pressure pump
LP	:	Inlet Port for low pressure pump
P	:	Out-let port
HPG	:	Gauge port on high pressure pump line
LPG	:	Gauge port on low pressure pump line
Pt	:	Pilot pressure port (optional)
T1	:	Tank port of high Pressure Relief valve
T2	:	Tank port of low Pressure Unloading valve
F	:	Filter port connection optional (Combining T1 & T2)

polyhydon pvt. ltd.

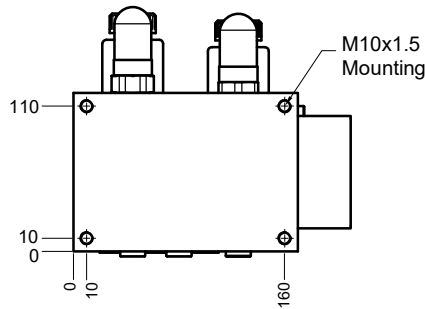
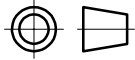
78-80, Machhe Industrial Estate,
 Machhe, Belgaum - 590 014. INDIA.

Phone : +91-(0)831- 2411001
 Fax : +91-(0)831- 2411002
 E-mail : sales@polyhydon.com
 Website : www.polyhydon.com

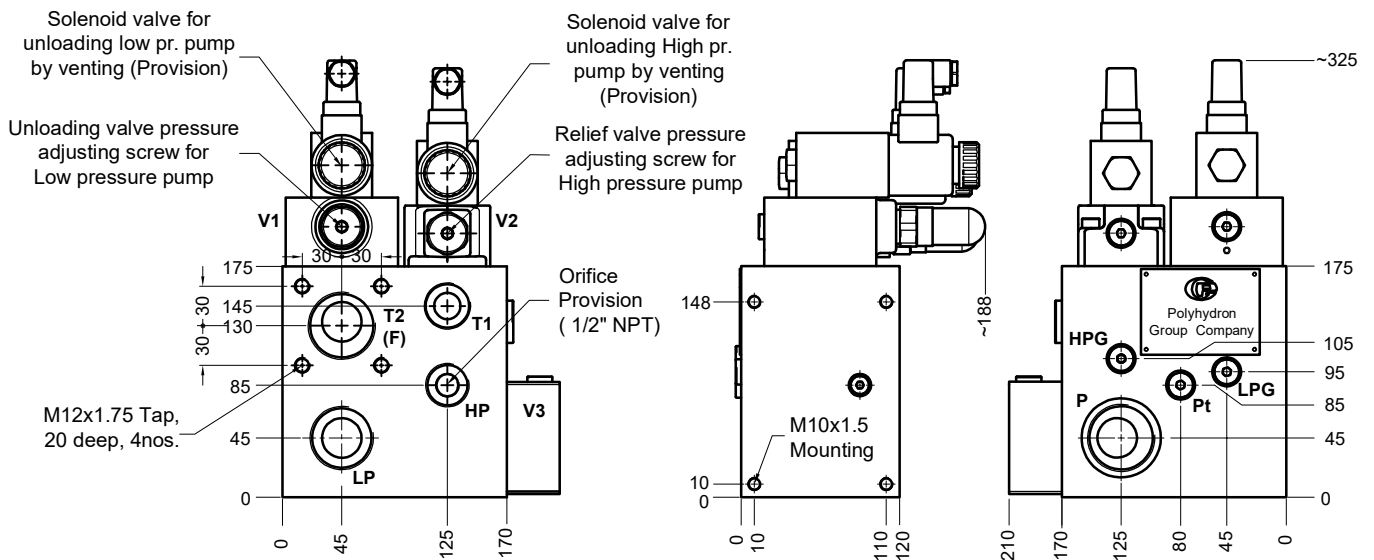


Unit dimensions

Dimensions in mm.



Port Details	
P	G 1 1/2
T1	G 1
T2 (F)	G 1 1/2
LP	G 1 1/2
HP	G 1
LPG	G 1/4
HPG	G 1/4
Pt	G 1/4

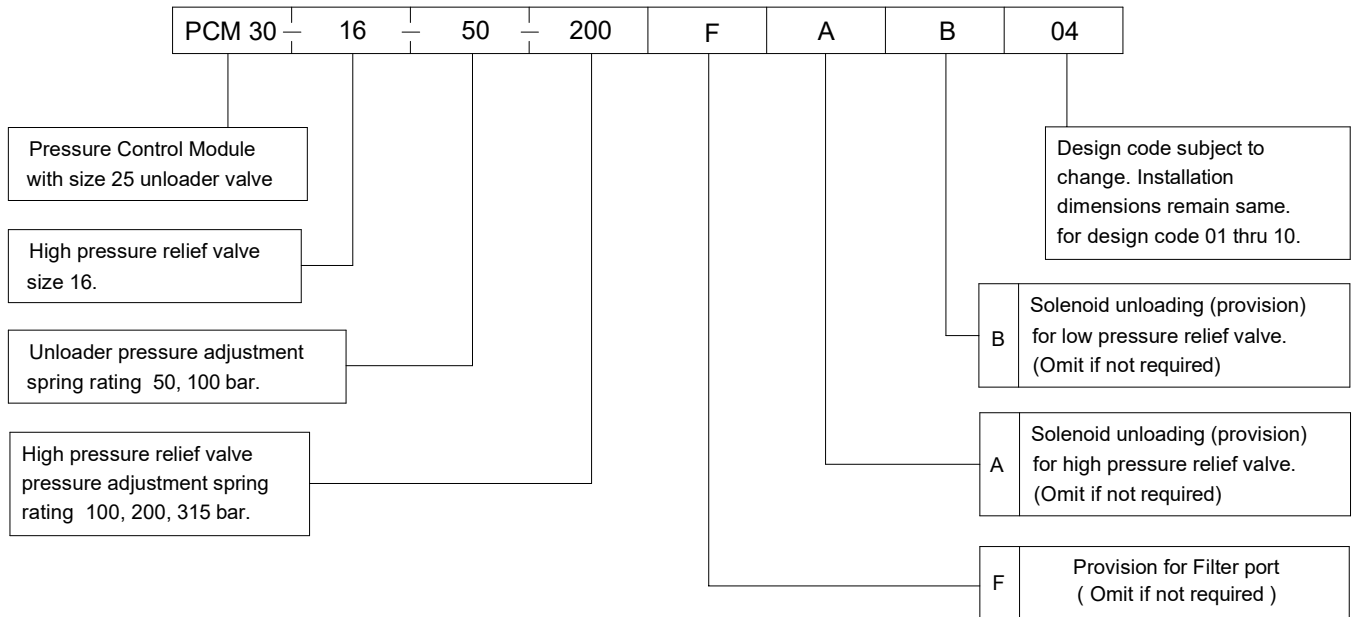




Technical specifications

Construction	:	Two stage poppet type high pressure Relief valve Two stage poppet type low pressure unloading valve
Mounting / Standard	:	Threaded body (Factory standard).
Mounting position	:	Optional.
Flow direction	:	As per Hydraulic Symbol.
Maximum operating pressure	:	For Low pressure pump 100 bar. For high pressure pump port 315 bar For port 'P' 315 bar.
Hydraulic medium	:	Mineral oil.
Viscosity range	:	10 cSt to 380 cSt.
Fluid temperature range	:	-20°C to +70°C.
Fluid cleanliness requirement	:	ISO 4406 20/18/15 or better.
Nominal flow handling capacity	:	High Pressure pump maximum flow : 100 lpm. Low Pressure pump maximum flow : 400 lpm
Mass (approx)	:	28 kg Approx.

Ordering code



Note : Solenoid (refer spool type) and Subplate to be ordered separately.

