



# SHUTTLE VALVE

## Model : SL06

Ref. No. D 03875  
Release: 01 / 2021

ENGINEERING - 1 of 2

**A Polyhydron Group Company**

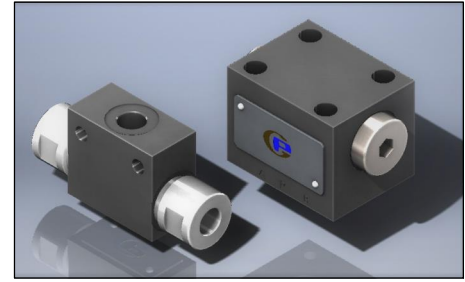
### Description

Shuttle valve model SL06\*\* are seat type valves.

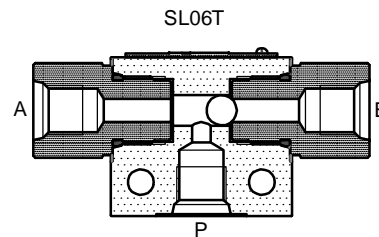
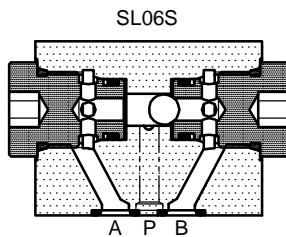
The valve automatically connects its port **P** to either port **A** or port **B**, whichever is at higher pressure level.

Isolates port **A** and port **B** from each other.

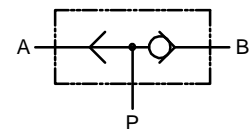
Port **P** can be connected to tank only if port **A** and port **B** are connected to tank.



### Section



### Hydraulic symbol

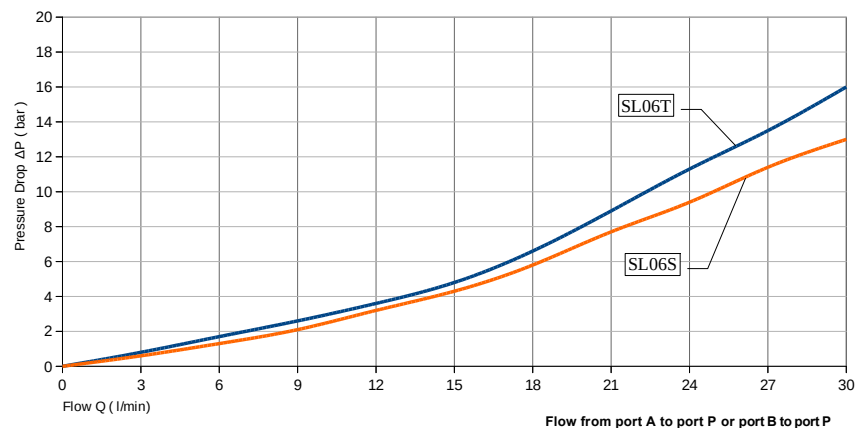


### Technical specifications

Construction	:	Seat type .
Mounting style	:	Subplate type confirming to ISO 4401-AB-03-04-A, IS 10187, DIN24340. Threaded type ( Factory standard ).
Mounting position	:	Optional ( Valve axis horizontal preferred ).
Flow direction	:	Port <b>A</b> to Port <b>P</b> if pressure at Port <b>A</b> > Port <b>B</b> . Port <b>B</b> to Port <b>P</b> if pressure at Port <b>B</b> > Port <b>A</b> . Port <b>P</b> to Port <b>A</b> and Port <b>B</b> , if pressure at Port <b>A</b> and Port <b>B</b> are equal. (This condition can be used to connect Port <b>P</b> to tank through a directional control valve).
Working pressure	:	315 bar for all Ports.
Hydraulic medium	:	Mineral oil.
Temperature range	:	-20°C to +80°C.
Viscosity range	:	10 cSt to 380 cSt.
Fluid cleanliness required	:	ISO 4406 20/18/15 or better.
Max. flow handling capacity	:	Refer graph.
Mass approx.	:	Model            SL06S            SL06T in Kg.            0.87            0.43

### Performance graph

Performance test Oil used VG-46 at 30°C.



**polyhydron pvt. ltd.**

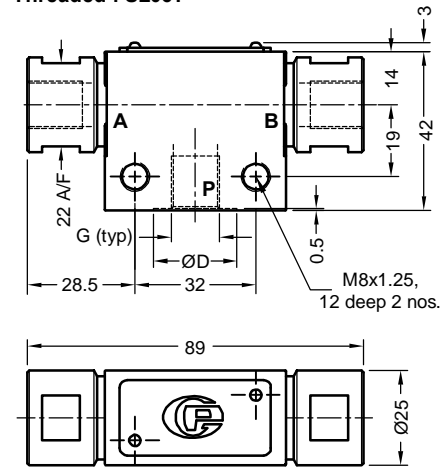
78-80, Machhe Industrial Estate,  
Machhe, Belgaum - 590 014. INDIA.

Phone : +91-(0)831- 2411001  
Fax : +91-(0)831- 2411002  
E-mail : polyhydron@gmail.com  
Website : www.polyhydron.com



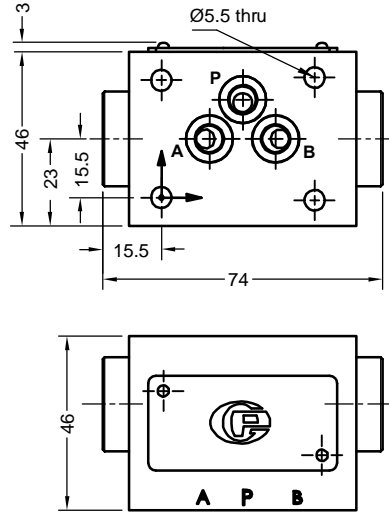
### Unit dimensions

Threaded : SL06T

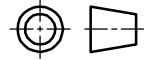


Model	G (typ)
SL06T02	1/4
SL06T03	3/8

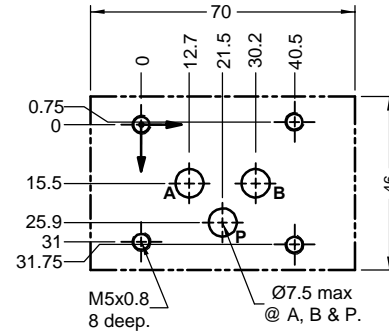
Sub-plate : SL06S



Dimensions in mm.

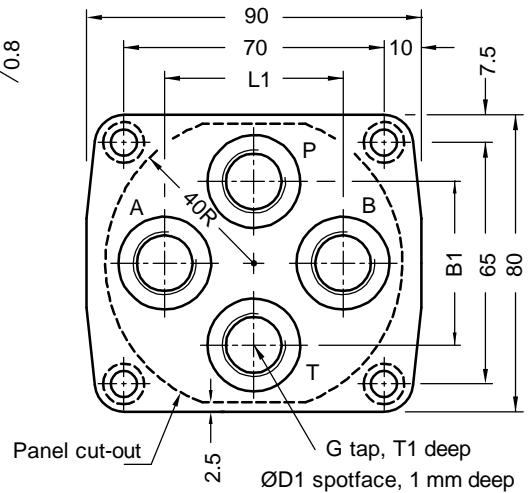
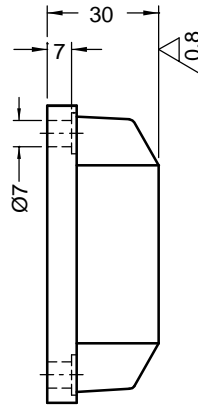
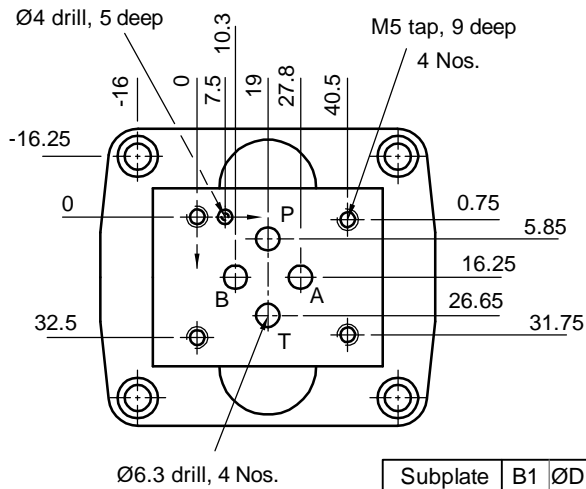


Subplate valve mounting interface as per ISO 4401.



Note: Valve fixing S.H.C Screws are not in scope of supply. Tightening torque for S.H.C Screws is 9.5 Nm.

### Valve mounting Sub plate



Subplate	B1	ØD1	G	L1	T1
1SD03G02	34	22	G1/4	36	12
1SD03G03	44	25	G3/8	48	12

Note : Valve mounting subplate to be ordered separately.

### Ordering code

SL 06 T 02 - 20

Shuttle valve

Size 06

Mounting style	
Threaded type	T
Subplate type	S

Design code subjected to Change . installation dimensions remain same for design code 20 thru 29.

Port connection	
02	G 1/4
03	G 3/8
Omit for subplate type	

All rights reserved.  
Subject to change without prior notice.  
Due to continuous improvement in the design of the product, the actual product supplied may look different than shown above.  
For critical applications, please ask for certified installation drawing.

All rights reserved.  
Subject to revision