



COUNTER BALANCE VALVE

Model : CBS*T*

Ref. No. D 02241
Release: 05 / 2024

ENGINEERING - 1 of 2

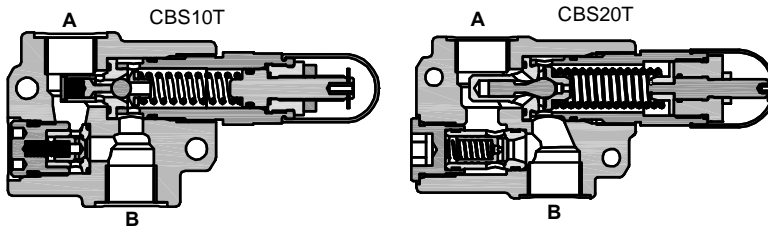
A Polyhydron Group Company

Description

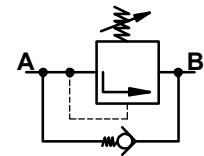
Counter balance valves CBS*T* are seat type valves. They offer free flow from their port B to Port A and give leak free closure in opposite direction upto a predetermined cracking pressure. The predetermined cracking pressure can be adjusted within its maximum specified range.



Section



Hydraulic symbol

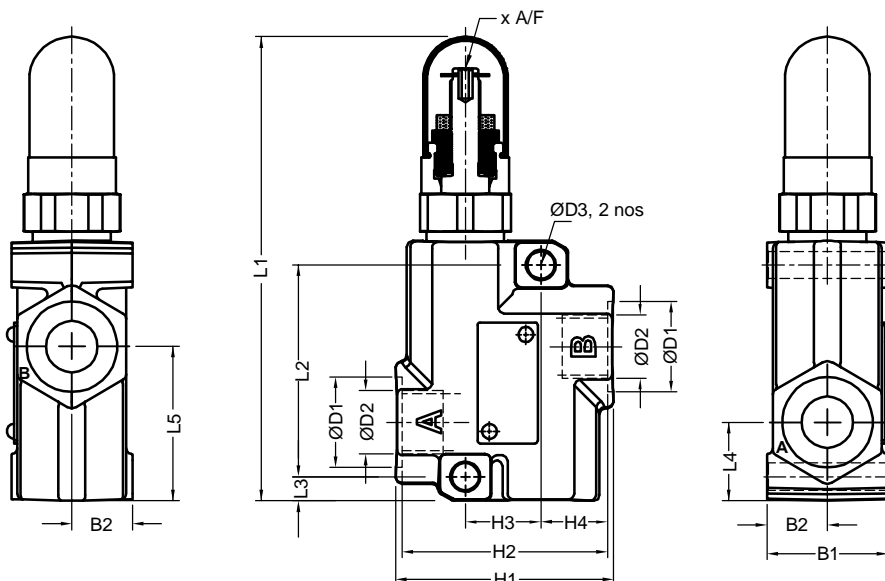


Technical specifications

Construction	:	Direct acting , Seat type, Internally pilot operated.	
Mounting style	:	Threaded port body	
Flow direction	:	Free flow from B to A	
	:	Piloted flow in opposite direction.	
Cracking pressure	:	Refer ordering code.	
Working pressure	:	315 bar for all Ports.	
Hydraulic medium	:	Mineral oil.	
Temperature range	:	-20°C to + 80°C.	
Viscosity range	:	10 cSt to 380 cSt.	
Fluid cleanliness required	:	ISO 4406 20/18/15 or better.	
Max. flow handling capacity	:	Model CBS10T	CBS20T
		in l/min.	30 115
Mass approx.	:	Model CBS10T	CBS20T
		in Kg.	1.3 4.0

Unit dimensions

Dimensions in mm.



Size	10	20
L1	154	226
L2	70	110
L3	8	11
L4	26	41
L5	51	86
B1	40	60
B2	20	30
H1	72	100
H2	68	96
H3	25	50
H4	22	23
ØD1	G1/2	G1
ØD2	30	44
ØD3	9	11
x A/F	4	5

Note : Valve mounting screws are out of scope of supply.



polyhydron pvt. ltd.

78-80, Machhe Industrial Estate,
Machhe, Belgaum - 590 014. INDIA.

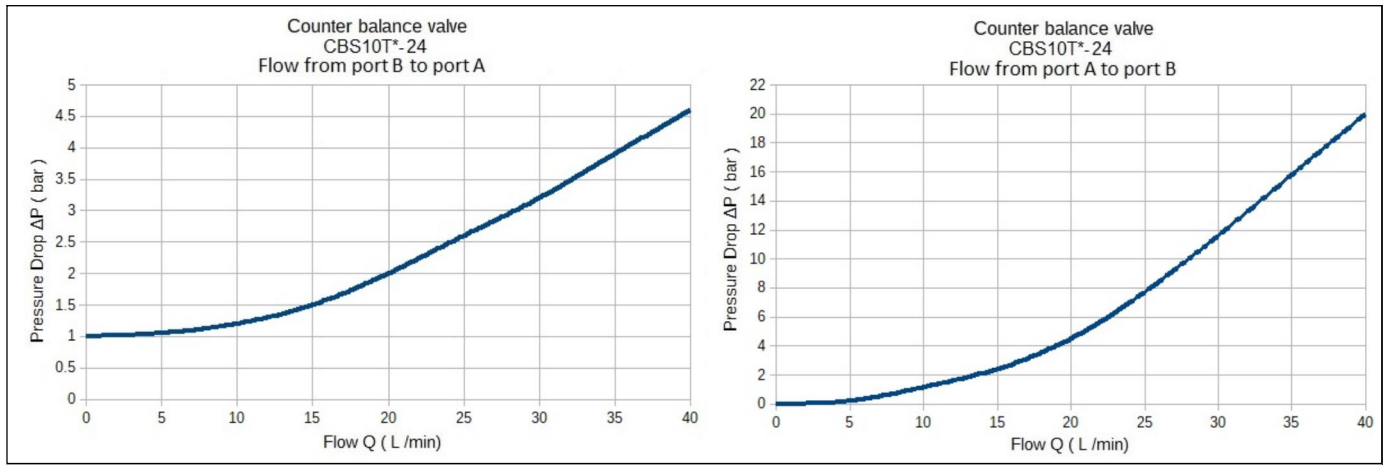
Phone : +91-(0)831- 2411001
Fax : +91-(0)831- 2411002
E-mail : polyhydron@gmail.com
Website : www.polyhydron.com



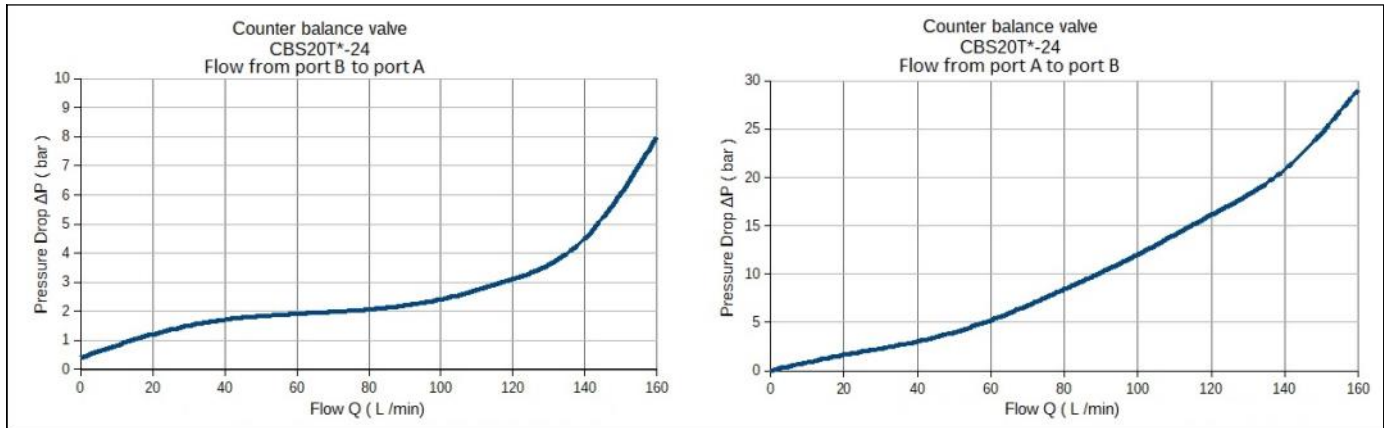
Performance graph

Grade of Oil used VG46 at 30°C temperature.

CBS10T*-24



CBS20T*-24



Ordering code

CB S 10 T 1 - 24

Counter balance valve

Set screw

Valve	Port
Size 10	G1/2
Size 20	G1

Threaded type

24	For CBS10T
11	For CBS20T
Design code subjected to change. Installation dimensions remain same for design code 01 to 29 for CB10T and 01 to 19 for CB20T	

Cracking pressure	
1*	2 to 12.5 bar
2	2 to 25 bar
3	5 to 50 bar
4	10 to 100 bar
5*	10 to 160 bar
6	20 to 200 bar

Note : Cracking pressure marked with * are not available in valve size 20.

All rights reserved.
Subject to change without prior notice.
Due to continuous improvement in the design of the product, the actual product supplied may look different than shown above.
For critical applications, please ask for certified installation drawing.