



The right connection
The right environment

Needle Valves, Sub-plate mounting MHNL

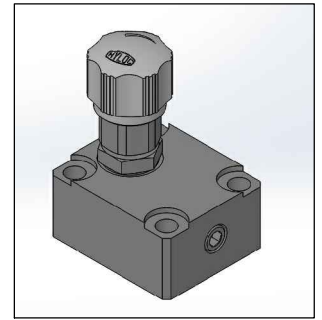
Ref. No. H02758
Release: Aug 2020
ENGINEERING - 1 of 2

Description

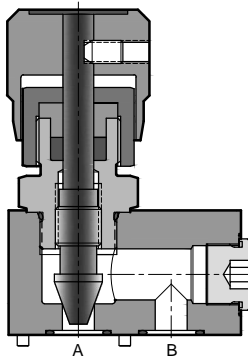
Needle valves model **MHNL** are rising spindle valves with taper needle construction.

The throttle is effective in either direction.

The mounting interface conforms to factory standard.



Section



Model : **MHNL**

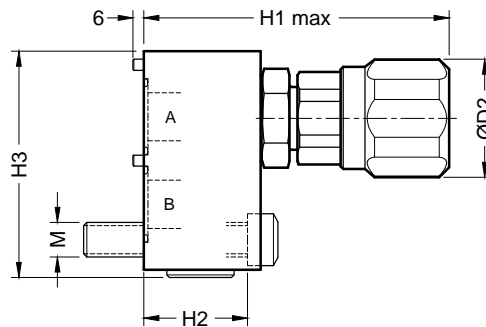
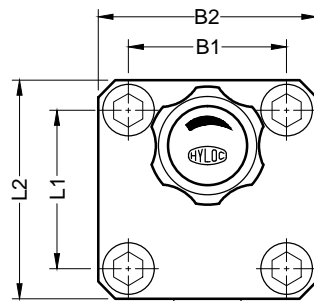
Hydraulic Symbol



Unit Dimensions

Sub-plate mounting

Dimensions in mm.



Size	Part code	B1	B2	L1	L2	H1	H2	H3	ØD2	Mounting screws (10.9)	Torque	Mass (Kg)
DN 11	MHNL11-2.0	47.8	65	60.5	78	116.0	35.0	79	40	M10 x 50 Long	20 Nm	1.5
DN 19	MHNL19-2.0	65.0	97	81.0	113	140.0	26.0	118	48	M16 x 50 Long	110 Nm	3.6
DN 28	MHNL28-2.0	92.0	127	92.0	127	156.5	60.0	131	68	M20 x 90 Long	225 Nm	8.5

Technical Specifications

Construction ----- Rising conical spindle.
 Mounting style ----- Sub-plate mounting.
 Mounting Interface ----- Factory standard.
 Flow direction ----- From 'A' to 'B' or 'B' to 'A'
 Operating pressure ----- 350 bar.

Hydraulic medium ----- Mineral oil.
 Viscosity range ----- 10 cSt to 380 cSt.
 Fluid temperature range ----- -20 °C to +70 °C
 Fluid cleanliness requirement ----- As per ISO 4406 20/18/15
 Nom. flow handling capacity ----- Refer graphs



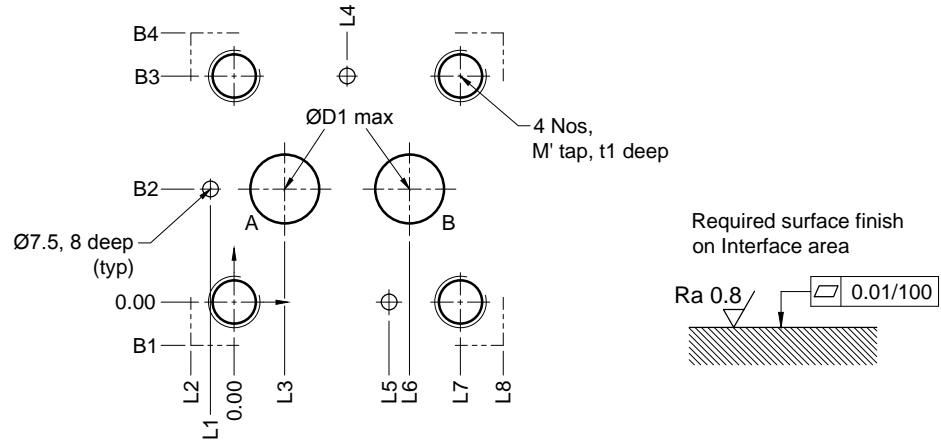
The right connection
The right environment

Needle Valves, Sub-plate mounting MHNL

Ref. No. H02758
Release: Aug 2020

ENGINEERING - 2 of 2

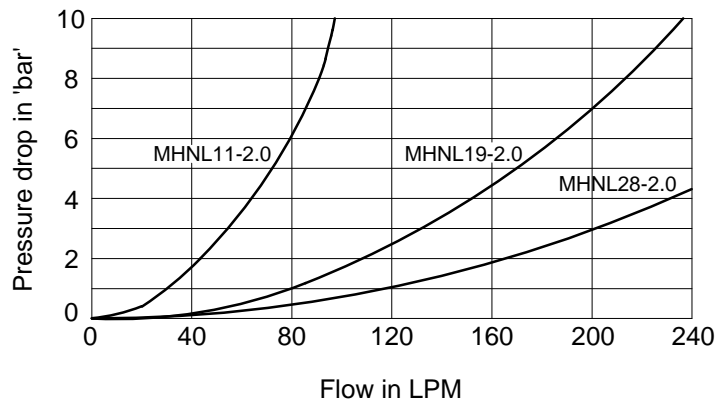
Interface - Factory standard



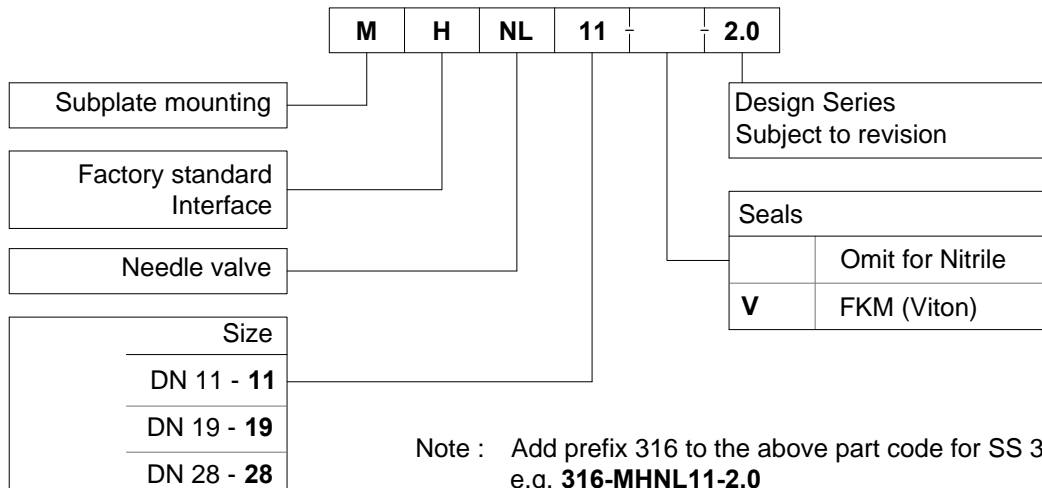
Size	Part code	ØD1	L1	L2	L3	L4	L5	L6	L7	L8	B1	B2	B3	B4	M	t 1
DN 11	MHNL11-2.0	11.0	---	-8.6	12.7	30.3	47.8	47.8	60.5	69.4	-8.6	23.9	47.8	56.4	M10	18
DN 19	MHNL19-2.0	19.0	-8.70	-16.0	22.2	40.5	---	68.3	81.0	97.0	-16.0	32.5	65.0	81.0	M16	28
DN 28	MHNL28-2.0	28.0	-9.65	-17.5	20.6	46.0	---	71.4	92.0	109.5	-17.5	46.0	92.0	109.5	M20	35

Performance curves

Oil used : ISO VG 68
Viscosity : 68 cSt @ 40 °C
Test conducted at : 50 °C
Condition : Valve fully opened



Ordering Code



All rights reserved.
Subject to change without notice.
Due to continuous improvement in the design of the product, the actual product supplied may look different than shown above.